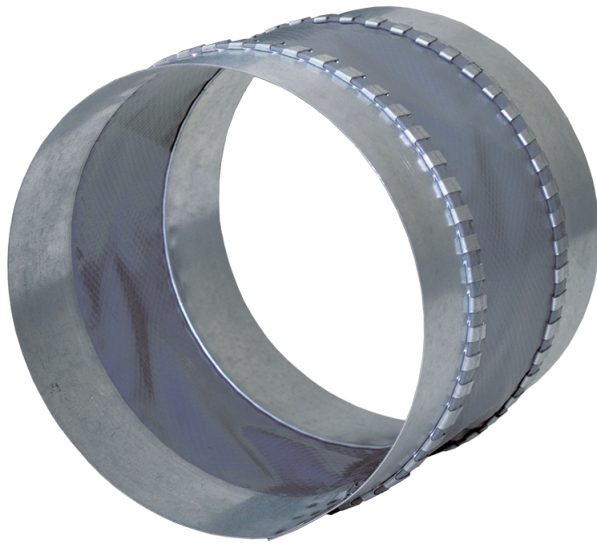
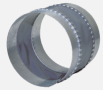


# EVA (round)

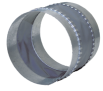
Flexible anti-vibration connectors for round ducts



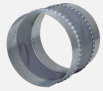
| Lineup  |         |
|---|---------|
|  | EVA 100 |
|  | EVA 125 |
|  | EVA 150 |
|  | EVA 160 |
|  | EVA 200 |
|  | EVA 250 |
|  | EVA 315 |



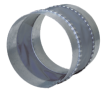
EVA 355



EVA 400



EVA 450



EVA 500