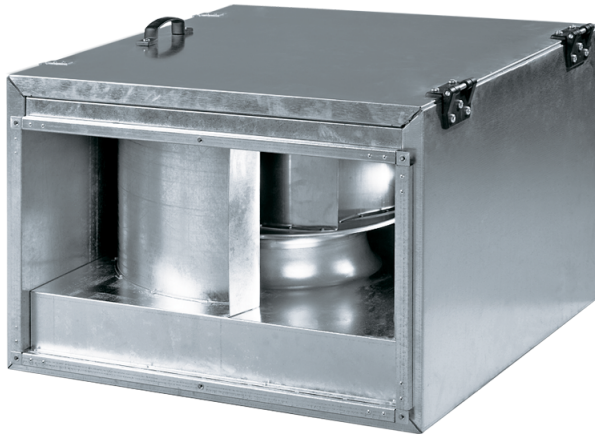









## Box-I

Centrifugal inline fans with backward curved blades in sound-insulated casings

- Sound-insulated casing
- Impeller type: Centrifugal impeller with backward curved blades



Lineup	Connected air duct size, mm	Phases	Rated power, W	Maximum airflow, m <sup>3</sup> /h
 Box-I 40x20 2E	400x200	1	138	930
 Box-I 50x25 2E	500x250	1	305	1720
 Box-I 50x30 4D	500x300	3	136	1380
 Box-I 60x30 4D	600x300	3	230	2530
 Box-I 60x35 4D (3~ 400 Y)	600x350	3	380	2660
 Box-I 60x35 4D (3~ 400 Δ)	600x350	3	510	2970
 Box-I 50x30 4E	500x300	1	140	1700

 Box-I 60x30 4E	600x300	1	220	2470
 Box-I 60x35 4E	600x350	1	470	2950