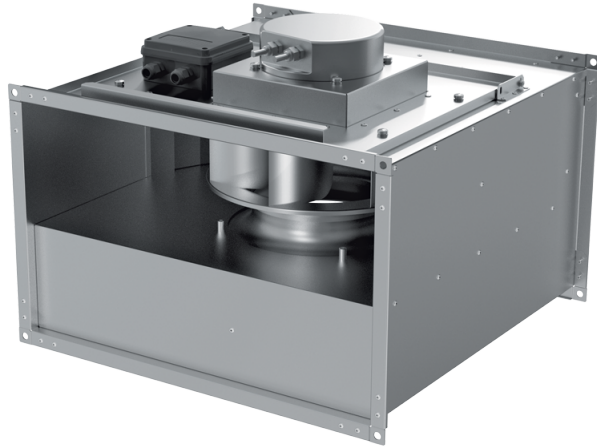









## Box EC

Centrifugal inline fans with backward curved blades with EC-motors

- Impeller type: Centrifugal impeller with backward curved blades



Lineup	Connected air duct size, mm	Phases	Rated power, W	Maximum airflow, m <sup>3</sup> /h
 Box EC 30x15-1 max	300x150	1	101	665
 Box EC 30x15-1	300x150	1	97	565
 Box EC 40x20-1 max	400x200	1	192	1190
 Box EC 40x20-1	400x200	1	91	810
 Box EC 50x25-1 max	500x250	1	555	2480
 Box EC 50x25-1	500x250	1	252	1590
 Box EC 50x30-1 max	500x300	1	553	2700

 Box EC 60x30-1 max			425	3060
 Box EC 60x30-1	600x300	1	326	2545
 Box EC 60x35-3 max	600x350	3	1308	4290
 Box EC 60x35-1	600x350	1	361	2815
 Box EC 70x40-3 max	700x400	3	2748	6810
 Box EC 70x40-1	700x400	1	795	5710
 Box EC 80x50-3 max	800x500	3	2925	8535
 Box EC 80x50-3	800x500	3	2025	8395
 Box EC 90x50-3 max	900x500	3	3429	11190
 Box EC 100x50-3 max	1000x500	3	3429	11190