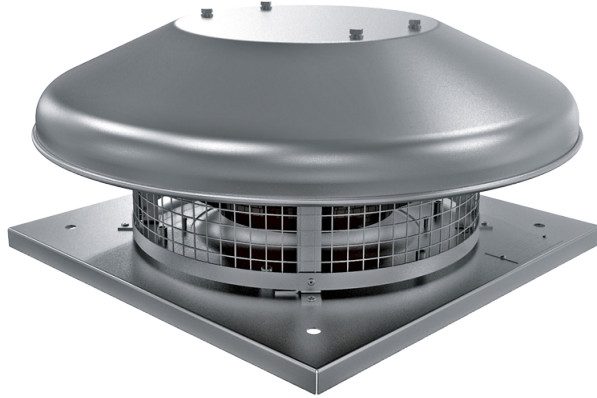


Tower-HC EC 280

Roof centrifugal fans with EC-motors

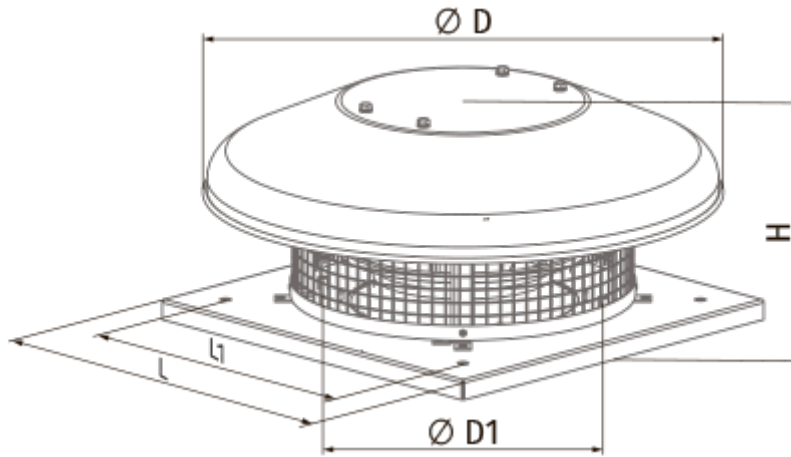


- Maximum airflow: 2400
- Sound pressure level LpA at 3 m: 48
- Motor type: EC
- Impeller type: Centrifugal backward curved blades
- Casing material: Coated steel

| | Unit of measurement | Tower-HC EC 280 |
|--|---------------------|-----------------|
| Speed | - | 1 |
| Phases | - | 1 |
| Minimum supply voltage | V | 230 |
| Maximum supply voltage | V | 230 |
| Power supply frequency | Hz | 50/60 |
| Rated power | W | 195 |
| Unit current | A | 1.53 |
| Maximum airflow | m ³ /h | 2400 |
| rotation speed at 50hz | - | 2610 |
| Sound pressure level LpA at 3 m | dB(A) | 48 |
| Weight | kg | 10 |
| Transported air temperature (max) | °C | 60 |
| Transported air temperature (min) | °C | -25 |
| Ingress protection rating | - | IPX4 |
| Ingress protection rating of the drive | - | IP55 |

Dimensions

| H | ØD | ØD1 | L | L1 |
|-----|-----|-----|-----|-----|
| 254 | 623 | 285 | 420 | 330 |




Ecodesign

| | |
|---------------------------------------|-----------------|
| Trademark | Blauberg |
| Model | Tower-HC EC 280 |
| Type of drive installed | Integrated VSD |
| Type of heat recovery system | None |
| Nominal flow rate (m ³ /s) | 0.377 |
| Nominal external pressure (Pa) | 275 |
| Maximum external leakage rates (%) | 2.7 |
| Static efficiency (%) | 62 |
| Effective electric power input (kW) | 0.194 |
| Sound power level (dB(A)) | 67 |
| Declared typology | NRVU UVU |

Accessories

Other accessories

| Name | Photo | Description |
|----------------------------|---|-----------------------------|
| CDT E/0-10 |  | Speed control for EC motors |