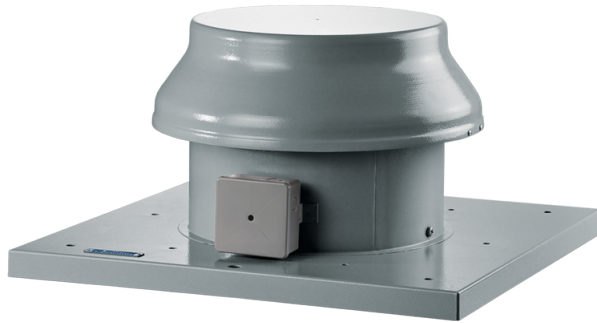


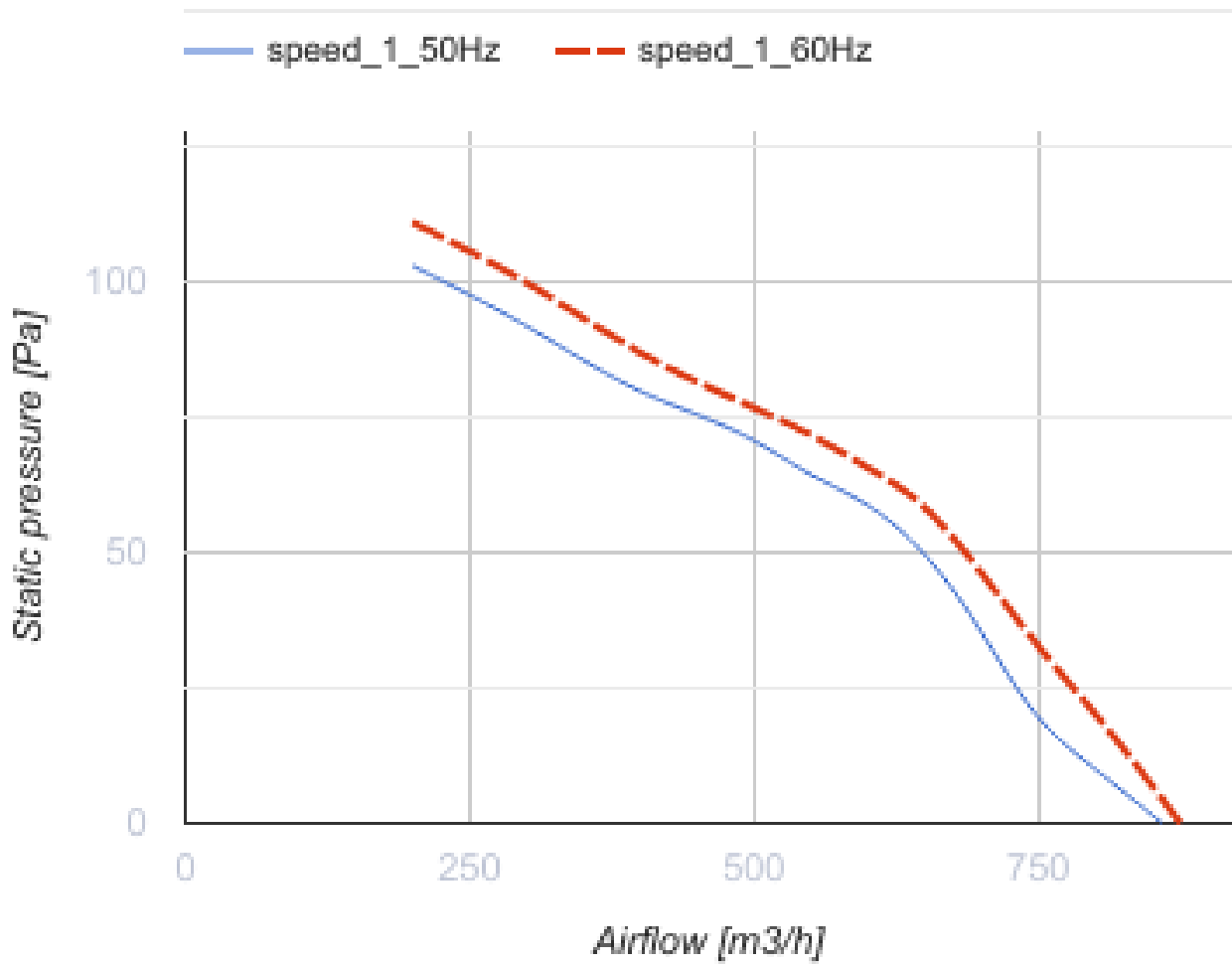
Tower-A 200 2E

Roof axial fans

- Maximum airflow: 860
- Sound pressure level LpA at 3 m: 50
- Motor type: AC
- Impeller type: Axial
- Casing material: Coated steel



	Unit of measurement	Tower-A 200 2E
Connected air duct size	mm	200
Speed	-	1
Minimum supply voltage	V	220
Maximum supply voltage	V	240
Power supply frequency	Hz	50/60
Rated power	W	55
Unit current	A	0.26
Maximum airflow	m ³ /h	860
Sound pressure level LpA at 3 m	dB(A)	50
Weight	kg	5
Transported air temperature (max)	°C	60
Transported air temperature (min)	°C	-30
Ingress protection rating	-	IP24
Ingress protection rating of the drive	-	IP44

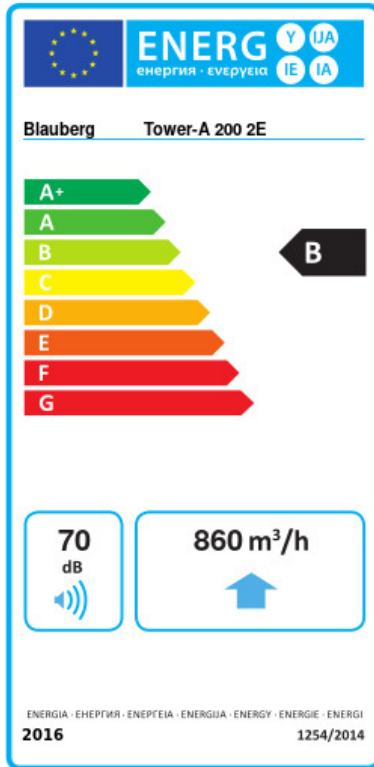


Dimensions

ØD	ØD1	H	L	L1
208	345	280	425	330



Ecodesign



Trademark	Blaubeerg					
Model	Tower-A 200 2E					
Specific energy consumption (SEC) (kWh/(m²/a))	Cold	Average		Warm		
	-54.4	A+	-27.3	B	-11.8	E
Type of ventilation unit	Unidirectional					
Type of drive installed	Variable speed					
Type of heat recovery system	None					
Maximum flow rate (m³/h)	860					
Electric power input (W)	55					
Reference flow rate (m³/s)	0.167					
Specific power input (SPI) (W/(m³/h))	0.073					
Control typology	Local demand control					
Maximum external leakage rates (%)	2.7					
Declared typology	RVU UVU					
Sound power level (dB(A))	70					
The annual electricity consumption (AEC) (kWh/a)	Cold	Average		Warm		
	39	39		39		
The annual heating saved (AHS) (kWh/a)	Cold	Average		Warm		
	5536	2830		1280		

Accessories

Thyristor speed controllers

Name	Photo	Description
CDT E1.8		Thyristor speed controller