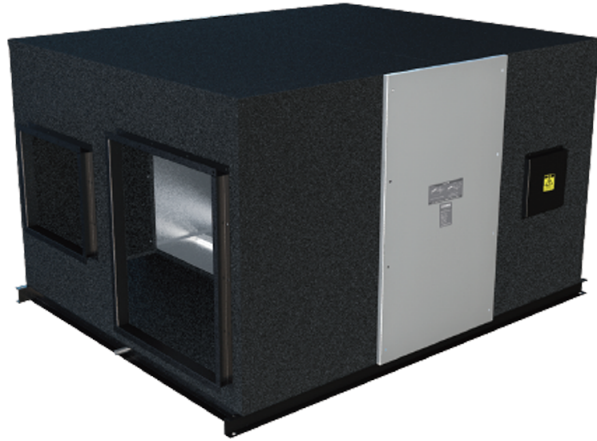


# KOMFORT GRE EC 4000 R

The KOMFORT GRE series total heat recovery unit is designed specifically for ultra-low energy consumption buildings



- Maximum airflow: 4000
- Sound pressure level LpA at 3 m: 62
- Heat exchanger type: Counter flow
- Extract filter: G4
- Supply filter: G4 + H11
- Sound insulation
- Motor type: EC
- Enthalpy heat exchanger
- Bypass: Auto
- Preheater: Optional
- Casing material: Galvanized steel
- Humidity sensor
- CO2 sensor
- VOC sensor
- PM2.5 sensor
- Temperature sensor

|                                 | Unit of measurement | KOMFORT GRE EC 4000 R |
|---------------------------------|---------------------|-----------------------|
| Minimum supply voltage          | V                   | 220                   |
| Maximum supply voltage          | V                   | 220                   |
| Power supply frequency          | Hz                  | 50                    |
| Rated power                     | W                   | 1800                  |
| Maximum airflow                 | m <sup>3</sup> /h   | 4000                  |
| Sound pressure level LpA at 3 m | dB(A)               | 62                    |
| Heat recovery efficiency, max   | %                   | 71.6                  |
| Heat exchanger type             | -                   | Counter flow          |
| Weight                          | kg                  | 275                   |
| Extract filter                  | -                   | G4                    |
| Supply filter                   | -                   | G4 + H11              |

## Dimensions

| L    | W    | H   | A    | B   | C   | D    | E   | F   | G   | M   | N   |
|------|------|-----|------|-----|-----|------|-----|-----|-----|-----|-----|
| 1785 | 1470 | 665 | 1885 | 368 | 735 | 1650 | 275 | 435 | 360 | 420 | 500 |

