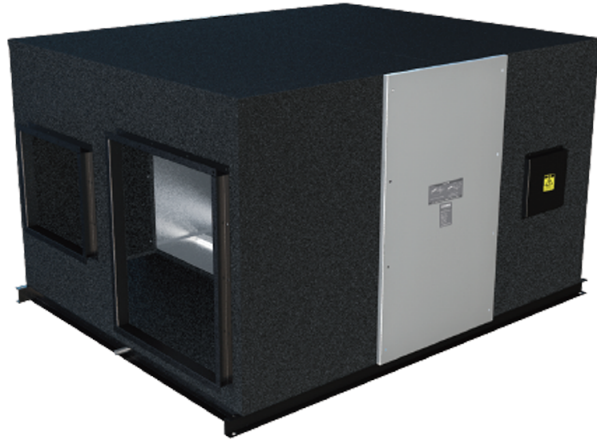


KOMFORT GRE EC 3000 R

The KOMFORT GRE series total heat recovery unit is designed specifically for ultra-low energy consumption buildings



- Maximum airflow: 3000
- Sound pressure level LpA at 3 m: 59
- Heat exchanger type: Counter flow
- Extract filter: G4
- Supply filter: G4 + H11
- Sound insulation
- Motor type: EC
- Enthalpy heat exchanger
- Bypass: Auto
- Preheater: Optional
- Casing material: Galvanized steel
- Humidity sensor
- CO2 sensor
- VOC sensor
- PM2.5 sensor
- Temperature sensor

| | Unit of measurement | KOMFORT GRE EC 3000 R |
|---------------------------------|---------------------|-----------------------|
| Minimum supply voltage | V | 220 |
| Maximum supply voltage | V | 220 |
| Power supply frequency | Hz | 50 |
| Rated power | W | 1325 |
| Maximum airflow | m ³ /h | 3000 |
| Sound pressure level LpA at 3 m | dB(A) | 59 |
| Heat recovery efficiency, max | % | 71.3 |
| Heat exchanger type | - | Counter flow |
| Weight | kg | 218 |
| Extract filter | - | G4 |
| Supply filter | - | G4 + H11 |

Dimensions

| L | W | H | A | B | C | D | E | F | G | M | N |
|------|------|-----|------|-----|-----|------|-----|-----|-----|-----|-----|
| 1625 | 1470 | 665 | 1725 | 368 | 735 | 1650 | 275 | 435 | 270 | 420 | 500 |

