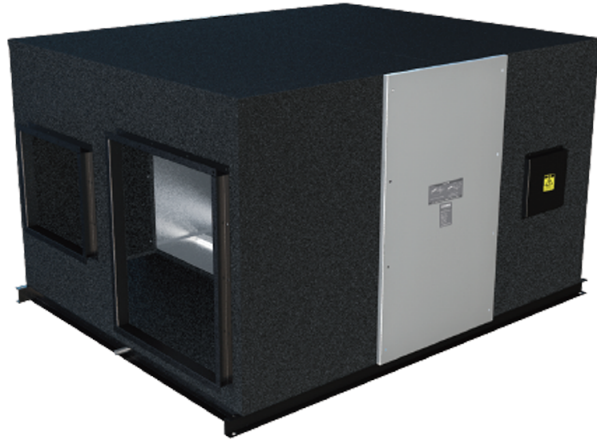


KOMFORT GRE EC 2500 L

The KOMFORT GRE series total heat recovery unit is designed specifically for ultra-low energy consumption buildings



- Maximum airflow: 2500
- Sound pressure level LpA at 3 m: 57
- Heat exchanger type: Counter flow
- Extract filter: G4
- Supply filter: G4 + H11
- Sound insulation
- Motor type: EC
- Enthalpy heat exchanger
- Bypass: Auto
- Preheater: Optional
- Casing material: Galvanized steel
- Humidity sensor
- CO2 sensor
- VOC sensor
- PM2.5 sensor
- Temperature sensor

	Unit of measurement	KOMFORT GRE EC 2500 L
Minimum supply voltage	V	220
Maximum supply voltage	V	220
Power supply frequency	Hz	50
Rated power	W	1120
Maximum airflow	m ³ /h	2500
Sound pressure level LpA at 3 m	dB(A)	57
Heat recovery efficiency, max	%	71.5
Heat exchanger type	-	Counter flow
Weight	kg	194
Extract filter	-	G4
Supply filter	-	G4 + H11

Dimensions

L	W	H	A	B	C	D	E	F	G	M	N
1495	1470	580	1595	368	735	1650	300	320	260	300	320

