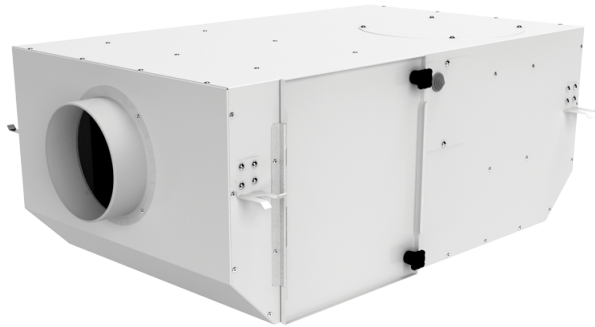


# Iso Box-F 200 G4/F8/Carbon V2

Centrifugal inline fans with forward curved blades in sound-insulated casings with filters

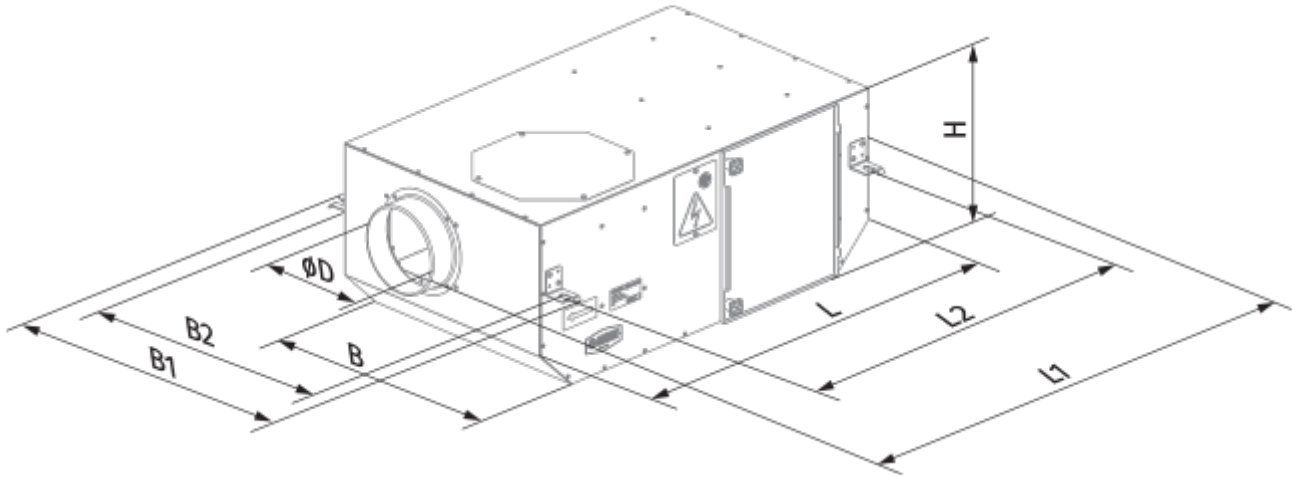


- Sound pressure level LpA at 3 m: 38
- Sound-insulated casing
- Impeller type: Centrifugal impeller with backward curved blades
- Casing material: Coated steel
- Installation in any position

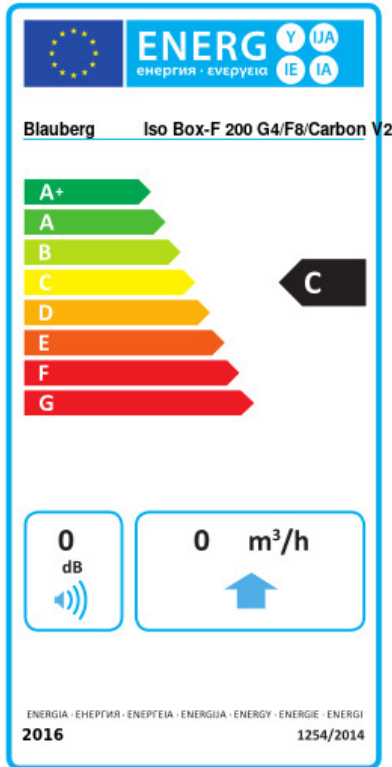
	Unit of measurement	Iso Box-F 200 G4/F8/Carbon V2	
Speed	-	1	2
Connected air duct size	mm	200	
Phases	-	1	
Minimum supply voltage	V	230	
Maximum supply voltage	V	230	
Power supply frequency	Hz	50	
Rated power	W	103	121
Unit current	A	0.45	0.57
Maximum airflow	m <sup>3</sup> /h	380	590
Rotation speed at 50hz	-	700	1200
Sound pressure level LpA at 3 m	dB(A)	22	38
Weight	kg	20.32	
Transported air temperature (max)	°C	40	
Transported air temperature (min)	°C	-25	
Ingress protection rating	-	IPX4	
Ingress protection rating of the drive	-	IP44	
Impeller material	-	Plastic	

## Dimensions

ØD	L	H	B	L1	B1	L2	B2
200	735	300	605	835	698	680	648



## Ecodesign



Trademark	Blauberg					
Model	Iso Box-F 200 G4/F8/Carbon V2					
Specific energy consumption (SEC) (kWh/(m²/a))	Cold		Average		Warm	
	0	A+	0	C	0	F
Type of ventilation unit	Unidirectional					
Type of drive installed	2-speed					
Type of heat recovery system	None					
Maximum flow rate (m³/h)	0					
Electric power input (W)	0					
Reference flow rate (m³/s)	0					
Reference pressure difference (Pa)	0					
Specific power input (SPI) (W/(m³/h))	0					
Control typology	Local demand control					
Maximum external leakage rates (%)	0					
Declared typology	RVU UVU					
Sound power level (dB(A))	0					
The annual electricity consumption (AEC) (kWh/a)	Cold		Average		Warm	
	0	0	0	0	0	0
The annual heating saved (AHS) (kWh/a)	Cold		Average		Warm	
	0	0	0	0	0	0