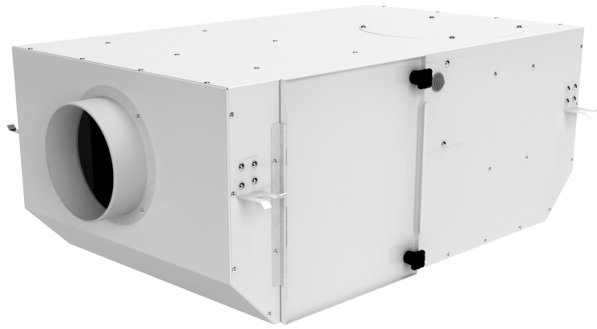


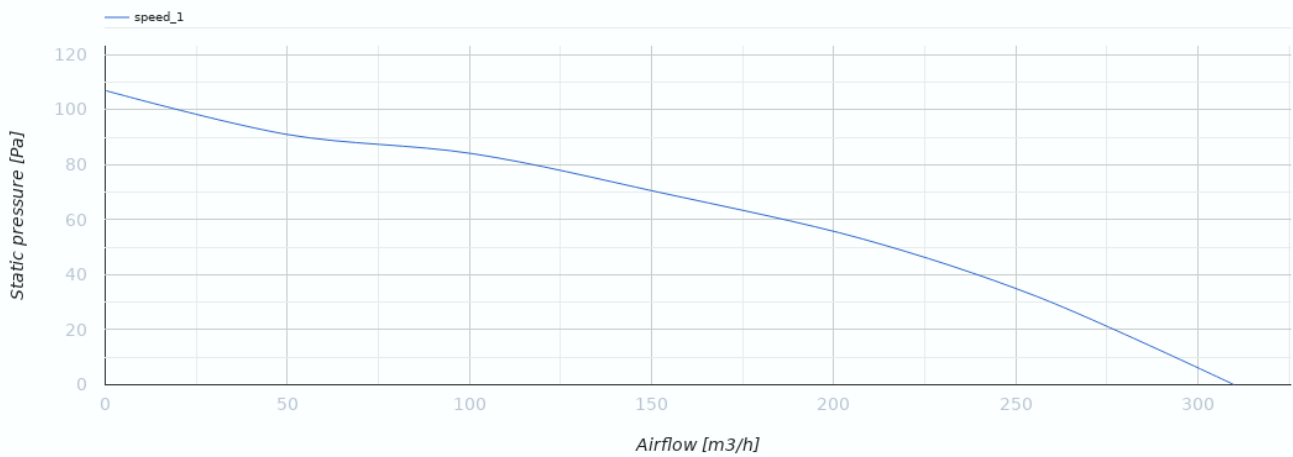
Iso Box-F 150 G4/H13 L

Centrifugal inline fans with forward curved blades in sound-insulated casings with filters



- Sound pressure level LpA at 3 m: 25
- Sound-insulated casing
- Impeller type: Centrifugal impeller with backward curved blades
- Casing material: Coated steel
- Installation in any position

	Unit of measurement	Iso Box-F 150 G4/H13 L
Connected air duct size	mm	150
Phases	-	1
Minimum supply voltage	V	230
Maximum supply voltage	V	230
Power supply frequency	Hz	50
Rated power	W	63
Unit current	A	0.29
Maximum airflow	m ³ /h	360
Rotation speed at 50hz	-	1300
Sound pressure level LpA at 3 m	dB(A)	25
Transported air temperature (max)	°C	40
Transported air temperature (min)	°C	-25
Ingress protection rating	-	IPX4
Ingress protection rating of the drive	-	IP44
Impeller material	-	Plastic



Dimensions

Ø D	L	H	B	L1	B1	L2	B2
150	705	250	415	805	508	650	458

