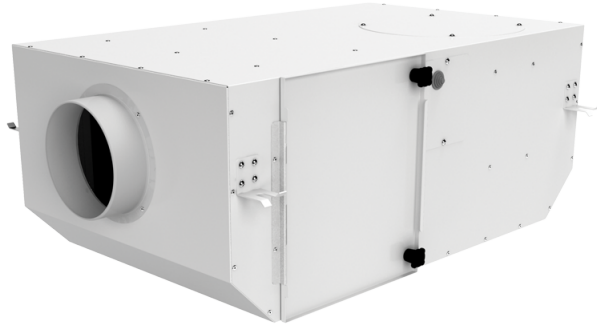


Iso Box-F 100 G4/H13/Carbon V2



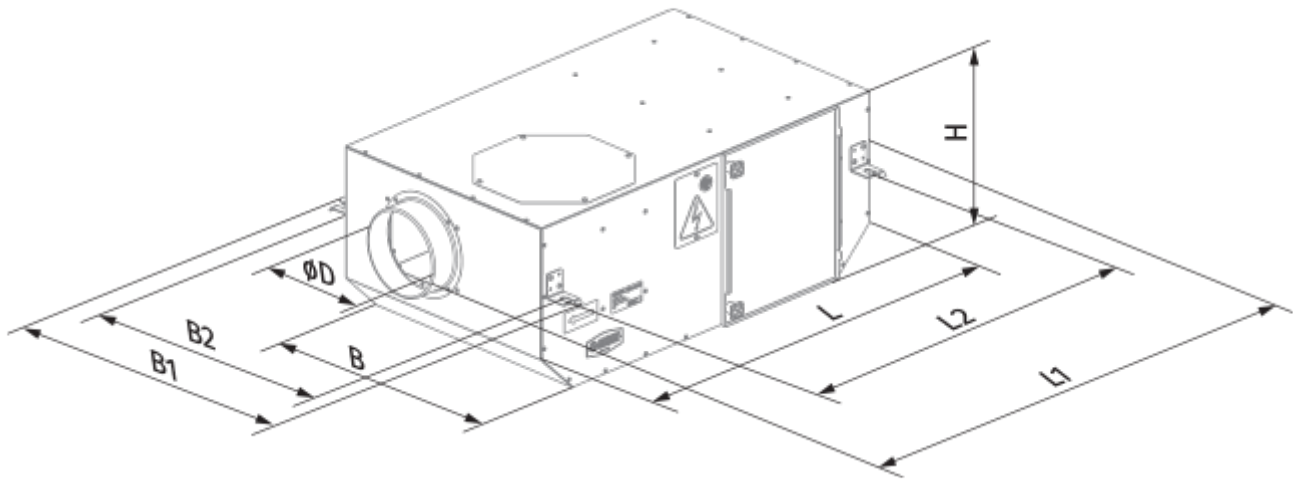
Centrifugal inline fans with forward curved blades in sound-insulated casings with filters

- Sound pressure level LpA at 3 m: 23
- Sound-insulated casing
- Impeller type: Centrifugal impeller with backward curved blades
- Casing material: Coated steel
- Installation in any position

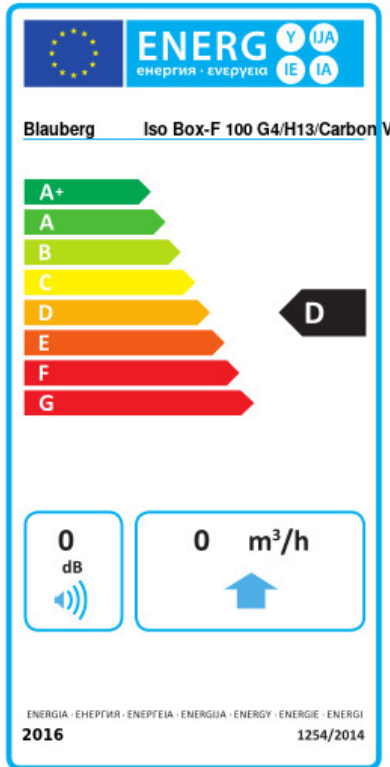
	Unit of measurement	Iso Box-F 100 G4/H13/Carbon V2	
Speed	-	1	2
Connected air duct size	mm	100	
Phases	-	1	
Minimum supply voltage	V	230	
Maximum supply voltage	V	230	
Power supply frequency	Hz	50	
Rated power	W	32	41
Unit current	A	0.15	0.19
Maximum airflow	m ³ /h	140	160
Rotation speed at 50hz	-	700	1200
Sound pressure level LpA at 3 m	dB(A)	14	23
Weight	kg	14.86	
Transported air temperature (max)	°C	40	
Transported air temperature (min)	°C	-25	
Ingress protection rating	-	IPX4	
Ingress protection rating of the drive	-	IP44	
Impeller material	-	Plastic	

Dimensions

ØD	L	H	B	L1	B1	L2	B2
100	705	250	415	805	508	650	458




Ecodesign



Trademark	Blaubeerg					
Model	Iso Box-F 100 G4/H13/Carbon V2					
Specific energy consumption (SEC) (kWh/(m²/a))	Cold		Average		Warm	
	0	A+	0	D	0	F
Type of ventilation unit	Unidirectional					
Type of drive installed	2-speed					
Type of heat recovery system	None					
Maximum flow rate (m³/h)	0					
Electric power input (W)	0					
Reference flow rate (m³/s)	0					
Reference pressure difference (Pa)	0					
Specific power input (SPI) (W/(m³/h))	0					
Control typology	Local demand control					
Maximum external leakage rates (%)	0					
Declared typology	RVU UVU					
Sound power level (dB(A))	0					
The annual electricity consumption (AEC) (kWh/a)	Cold		Average		Warm	
	0		0		0	
The annual heating saved (AHS) (kWh/a)	Cold		Average		Warm	
	0		0		0	

Accessories

Speed control switches

Name	Photo	Description
CDP-2/10		Multi-speed switch