

CIVIC EC DBE 1000 S21 V.2

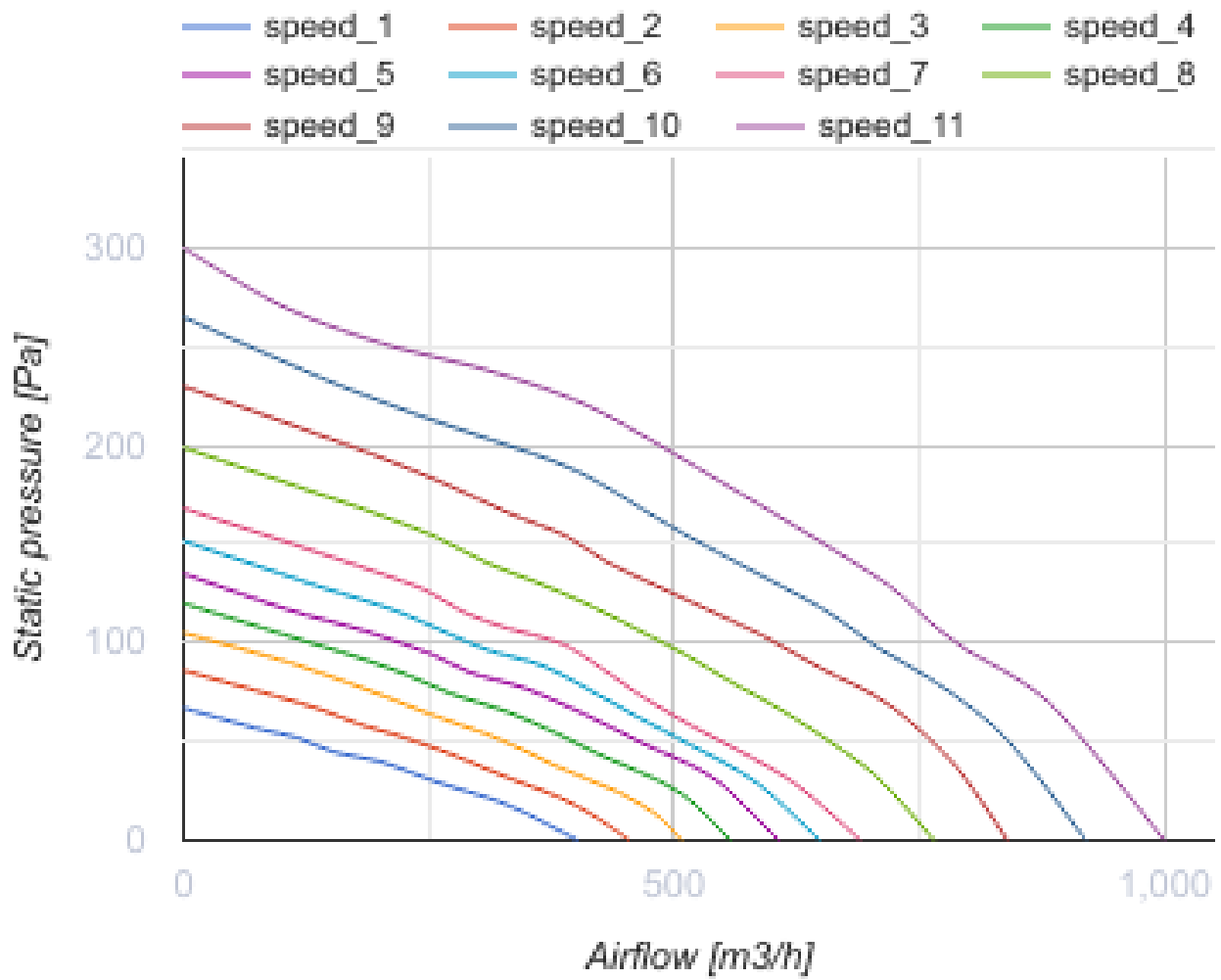
The CIVIC EC DB V.2 units are designed for single-room ventilation of schools, offices and other public and commercial premises



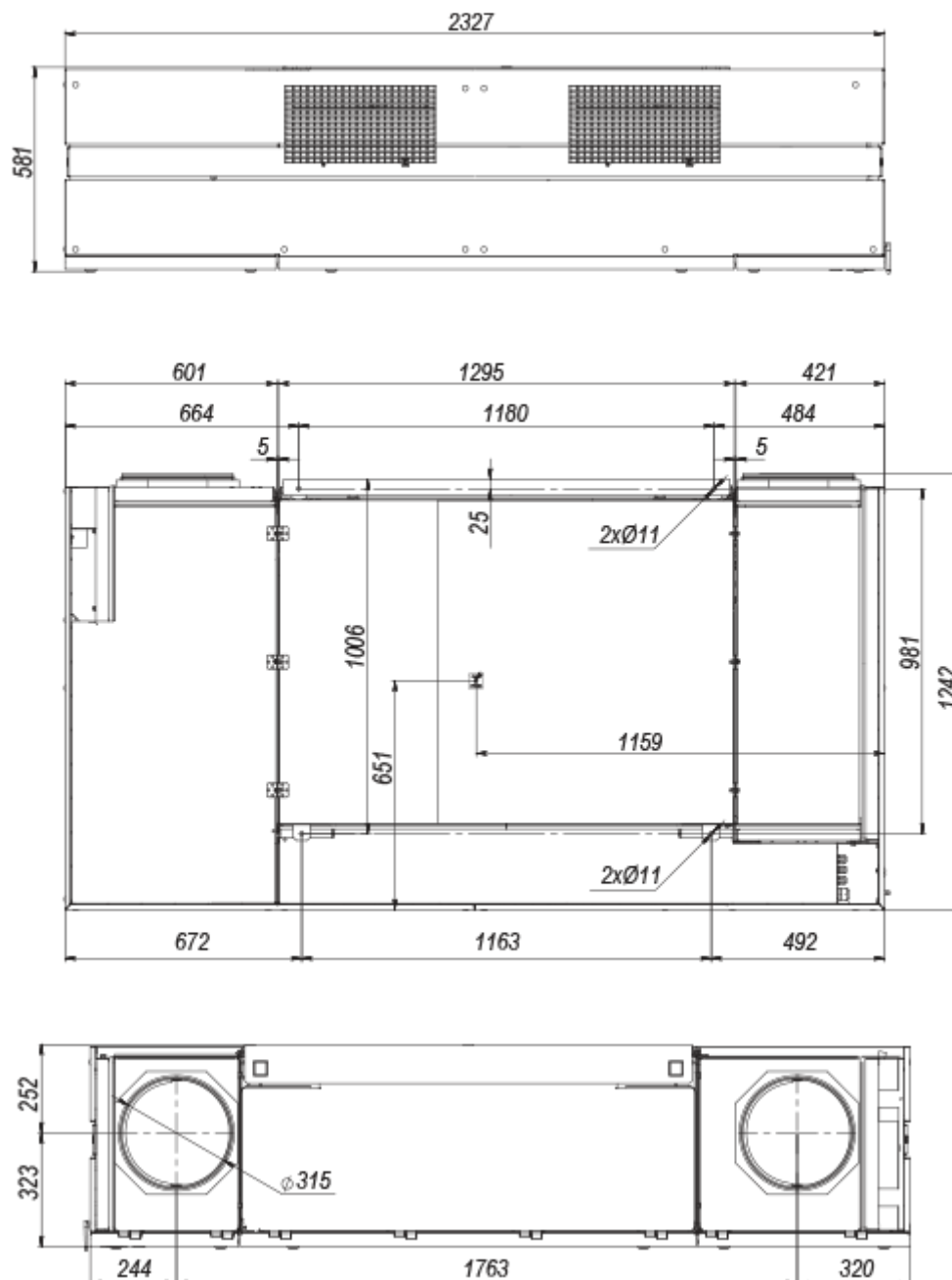
- Power of electrical preheater: 3150
- Maximum airflow: 1000
- Sound pressure level LpA at 3 m: 24
- Sound pressure level LpA at 1 m: 34
- Heat exchanger type: Counter flow
- Sound insulation
- Motor type: EC
- Casing material: Galvanized steel
- Humidity sensor: Optional
- CO2 sensor: Optional
- VOC sensor: Optional
- Temperature sensor: Built-in

	Unit of measurement	CIVIC EC DBE 1000 S21 V.2
Connected air duct size	mm	315
Minimum supply voltage	V	400
Maximum supply voltage	V	400
Power supply frequency	Hz	50/60
Rated power	W	250
Power of electrical preheater	W	3150
Unit current	A	1.85
Maximum airflow	m ³ /h	1000
Sound pressure level LpA at 3 m	dB(A)	24
Sound pressure level LpA at 1 m	dB(A)	34
Heat recovery efficiency, max	%	93
Heat exchanger type	-	Counter flow
Heat exchanger material	-	Polystyrene
Weight	kg	271
Transported air temperature (max)	°C	40
Transported air temperature (min)	°C	-25
Ambient air temperature min	°C	1
Ambient air temperature max	°C	40
Ambient air humidity max	%	60
Ingress protection rating	-	IP20

Ingress protection rating of the drive	-	IP44
--	---	------





Dimensions






Accessories

Other accessories



Name	Photo	Description
S22		Control panels
S22 Wi-Fi		Control panels

S25		LCD control panel
---------------------	---	-------------------

Other accessories

Name	Photo	Description
FS2		Humidity sensor
CD-1		CO2 sensors
CD-2		CO2 sensors
CD-3		

Other accessories

Name	Photo	Description
SFK 20x32		Hydraulic syphon for condensate drainage
CP-2		Drain pump