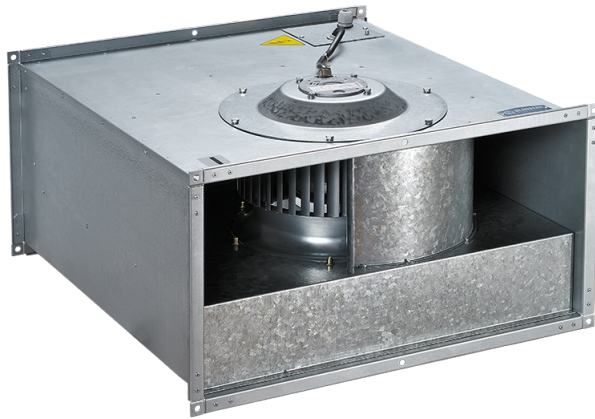


Box-F 800x500 4D

Centrifugal fans for rectangular ducts



- Maximum airflow: 8120
- Sound pressure level LpA at 3 m: 67
- Motor type: AC
- Impeller type: Centrifugal forward curved blades
- Casing material: Galvanized steel
- Installation in any position

	Unit of measurement	Box-F 800x500 4D
Connected air duct size	mm	800x500
Speed	-	1
Minimum supply voltage	V	400
Maximum supply voltage	V	400
Power supply frequency	Hz	50
Rated power	W	5850
Unit current	A	9.35
Maximum airflow	m ³ /h	8120
Sound pressure level LpA at 3 m	dB(A)	67
Weight	kg	74
Transported air temperature (max)	°C	40
Transported air temperature (min)	°C	-25
Ingress protection rating	-	IPX4
Ingress protection rating of the drive	-	IP44

Dimensions

B	B1	B2	H	H1	H2	H3	L
800	820	840	500	520	540	580	820

