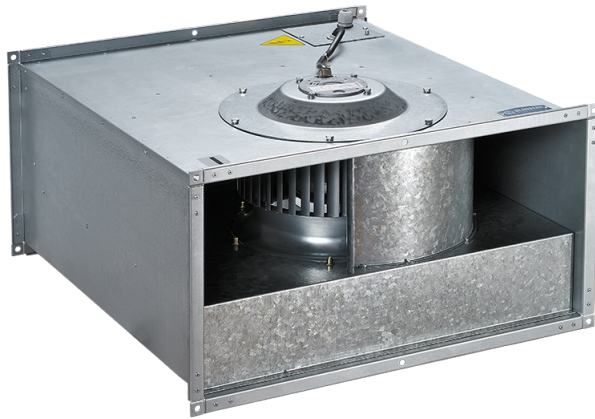


Box-F 600x350 4E

Centrifugal fans for rectangular ducts



- Maximum airflow: 4260
- Sound pressure level LpA at 3 m: 59
- Motor type: AC
- Impeller type: Centrifugal forward curved blades
- Casing material: Galvanized steel
- Installation in any position

	Unit of measurement	Box-F 600x350 4E
Connected air duct size	mm	600x350
Speed	-	1
Minimum supply voltage	V	230
Maximum supply voltage	V	230
Power supply frequency	Hz	50
Rated power	W	2840
Unit current	A	13.9
Maximum airflow	m ³ /h	4260
Sound pressure level LpA at 3 m	dB(A)	59
Weight	kg	49.5
Transported air temperature (max)	°C	40
Transported air temperature (min)	°C	-20
Ingress protection rating	-	IPX4
Ingress protection rating of the drive	-	IP44

Dimensions

B	B1	B2	H	H1	H2	H3	L
600	620	640	350	370	390	425	735

