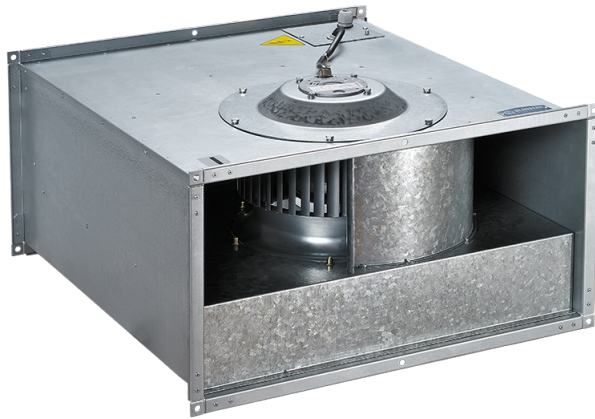


# Box-F 500x300 4D

Centrifugal fans for rectangular ducts



- Maximum airflow: 2350
- Sound pressure level LpA at 3 m: 56
- Motor type: AC
- Impeller type: Centrifugal forward curved blades
- Casing material: Galvanized steel
- Installation in any position

	Unit of measurement	Box-F 500x300 4D
Connected air duct size	mm	500x300
Speed	-	1
Minimum supply voltage	V	400
Maximum supply voltage	V	400
Power supply frequency	Hz	50
Rated power	W	855
Unit current	A	1.7
Maximum airflow	m <sup>3</sup> /h	2350
Sound pressure level LpA at 3 m	dB(A)	56
Weight	kg	33
Transported air temperature (max)	°C	50
Transported air temperature (min)	°C	-20
Ingress protection rating	-	IPX4
Ingress protection rating of the drive	-	IP44

## Dimensions

B	B1	B2	H	H1	H2	H3	L
500	520	540	300	320	340	365	680

