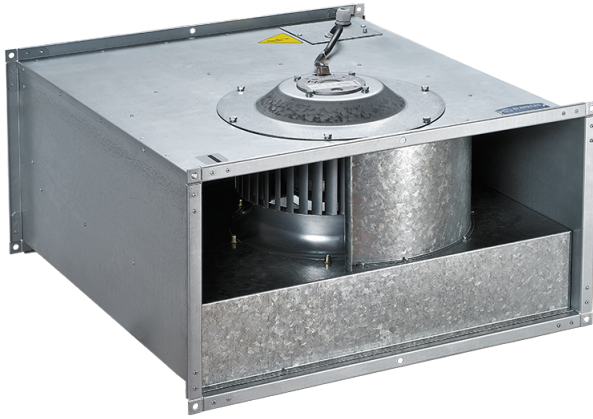


# Box-F 500x250 4D

Centrifugal inline fans with forward curved blades



- Maximum airflow: 1850
- Sound pressure level LpA at 3 m: 54
- Motor type: AC
- Impeller type: Centrifugal forward curved blades
- Casing material: Galvanized steel
- Installation in any position

	Unit of measurement	Box-F 500x250 4D
Connected air duct size	mm	500x250
Speed	-	1
Minimum supply voltage	V	400
Maximum supply voltage	V	400
Power supply frequency	Hz	50
Rated power	W	570
Unit current	A	0.94
Maximum airflow	m <sup>3</sup> /h	1850
Sound pressure level LpA at 3 m	dB(A)	54
Weight	kg	24
Transported air temperature (max)	°C	40
Transported air temperature (min)	°C	-20
Ingress protection rating	-	IPX4
Ingress protection rating of the drive	-	IP44

## Dimensions

B	B1	B2	H	H1	H2	H3	L
500	520	540	250	270	290	335	640

