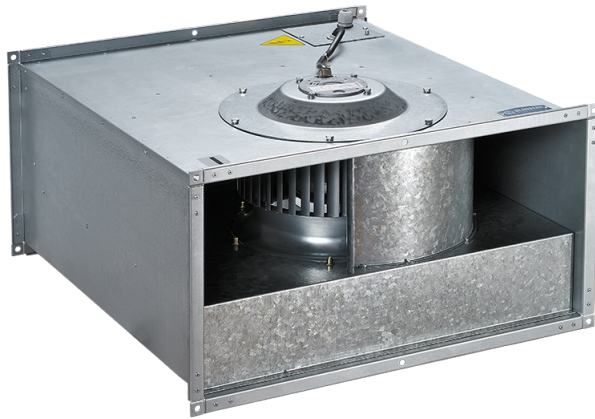


# Box-F 400x200 4E

Centrifugal fans for rectangular ducts



- Maximum airflow: 1440
- Sound pressure level LpA at 3 m: 50
- Motor type: AC
- Impeller type: Centrifugal forward curved blades
- Casing material: Galvanized steel
- Installation in any position

	Unit of measurement	Box-F 400x200 4E
Connected air duct size	mm	400x200
Speed	-	1
Minimum supply voltage	V	230
Maximum supply voltage	V	230
Power supply frequency	Hz	50
Rated power	W	295
Unit current	A	1.32
Maximum airflow	m <sup>3</sup> /h	1440
Sound pressure level LpA at 3 m	dB(A)	50
Weight	kg	17.5
Transported air temperature (max)	°C	40
Transported air temperature (min)	°C	-25
Ingress protection rating	-	IPX4
Ingress protection rating of the drive	-	IP44

## Dimensions

B	B1	B2	H	H1	H2	H3	L
400	420	440	200	220	240	255	500

