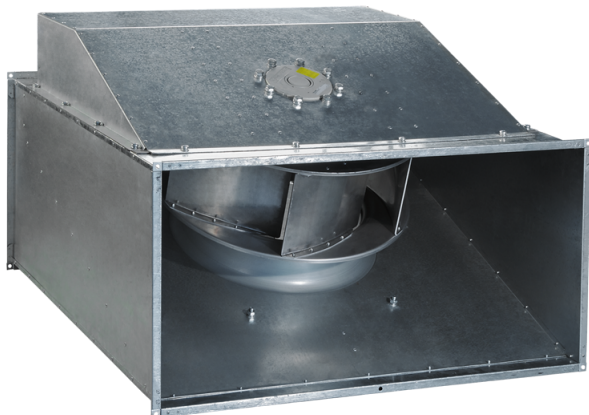


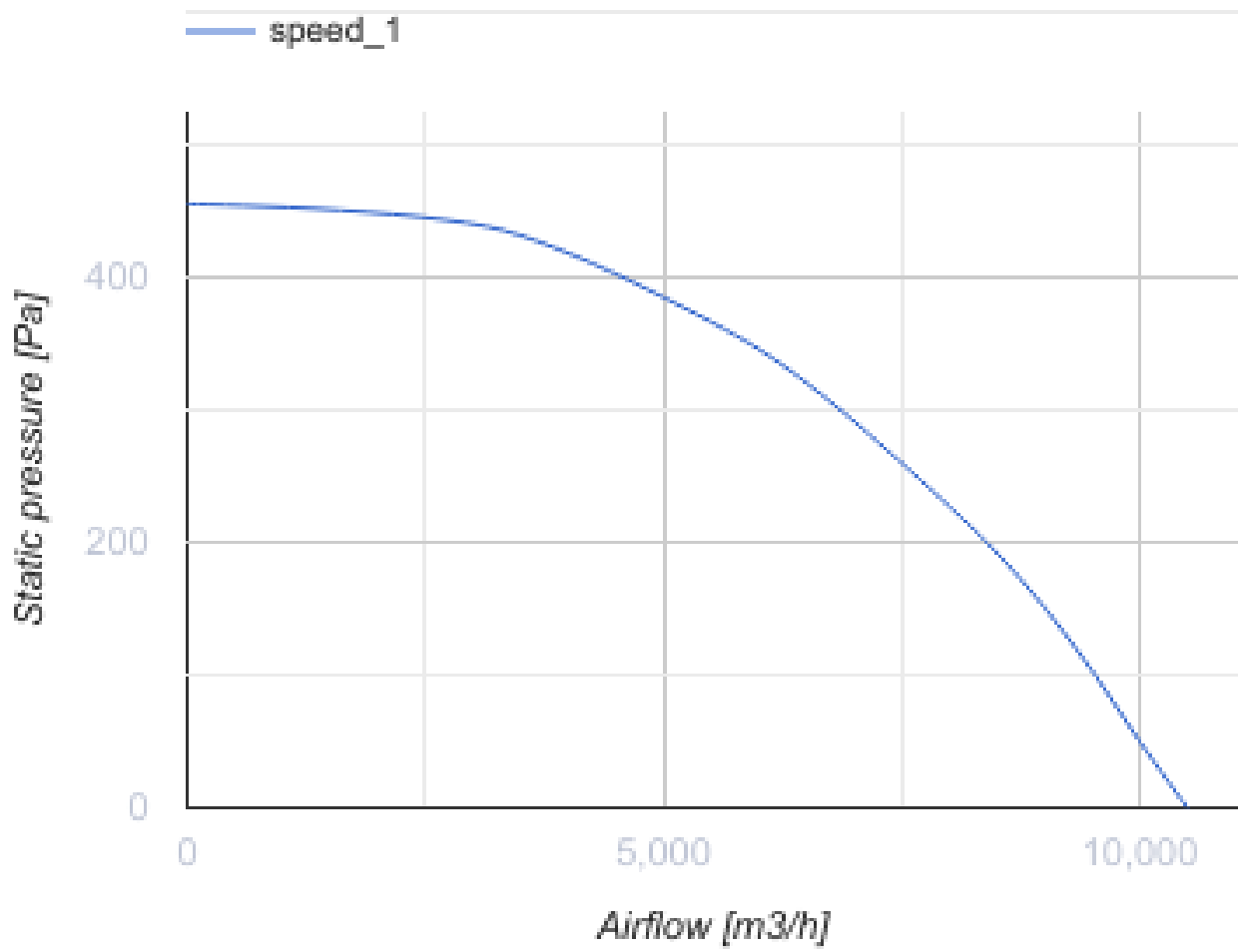
## Box 100x50 6D

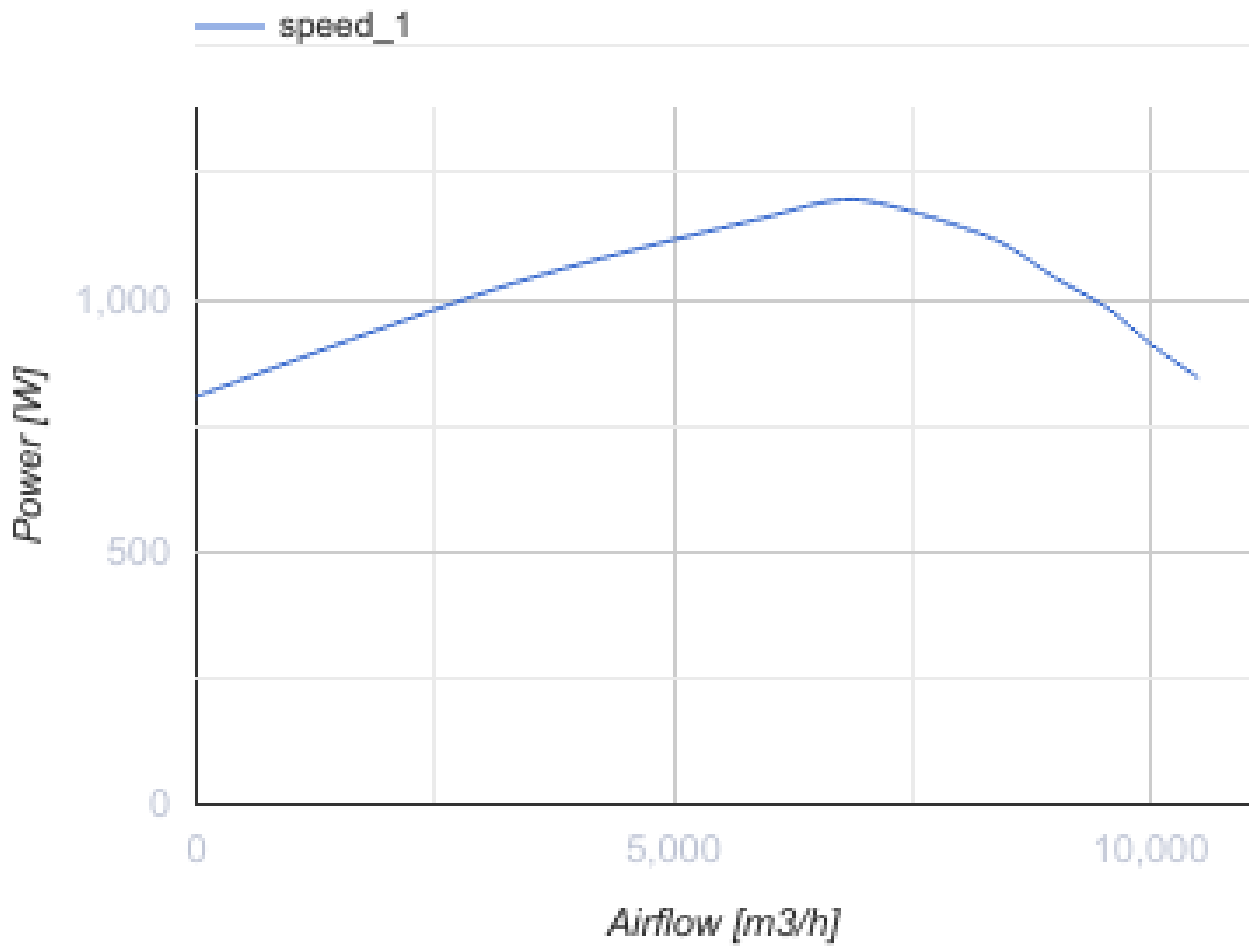
Centrifugal fans for rectangular ducts



- Maximum airflow: 10500
- Sound pressure level LpA at 3 m: 69
- Motor type: AC
- Impeller type: Centrifugal backward curved blades
- Casing material: Galvanized steel
- Installation in any position

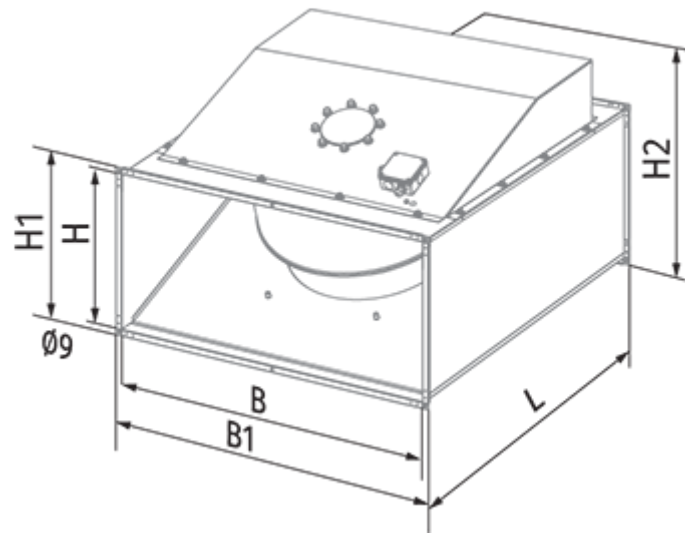
	Unit of measurement	Box 100x50 6D
Connected air duct size	mm	1000x500
Minimum supply voltage	V	400
Maximum supply voltage	V	400
Power supply frequency	Hz	50
Rated power	W	1198
Unit current	A	2.7
Maximum airflow	m <sup>3</sup> /h	10500
Sound pressure level LpA at 3 m	dB(A)	69
Weight	kg	120
Transported air temperature (max)	°C	50
Transported air temperature (min)	°C	-25
Ingress protection rating	-	IPX4
Ingress protection rating of the drive	-	IP44





### Dimensions

B	B1	H	H1	H2	L
1000	1040	500	540	720	1150




## Ecodesign

Trademark	Blauberg
Model	Box 100x50 6D
Type of ventilation unit	Unidirectional
Type of drive installed	External MSD or VSD
Type of heat recovery system	None
Nominal flow rate (m <sup>3</sup> /s)	1.667
Nominal external pressure (Pa)	340
Maximum external leakage rates (%)	2.7
Static efficiency (%)	48.2
Declared typology	NRVU UVU
Sound power level (dB(A))	84
Effective electric power input (kW)	1.2

## Accessories

### Thyristor speed controllers

Name	Photo	Description
<a href="#">CDT E1.8</a>		Thyristor speed controller