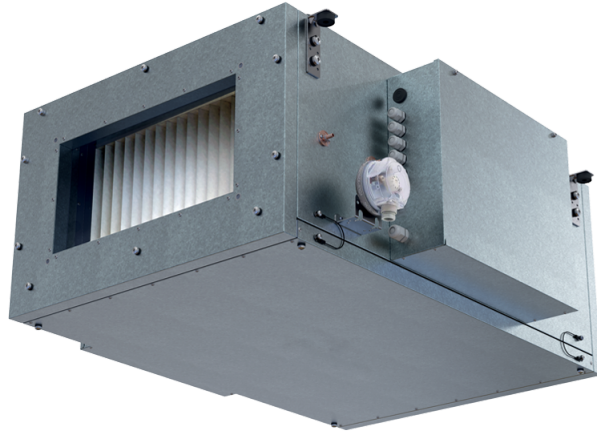


Blaubox EC ME 3000-45 S31

Supply ventilation units with an electric heater

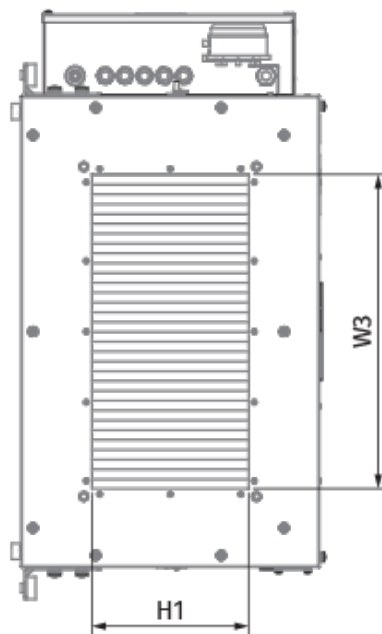
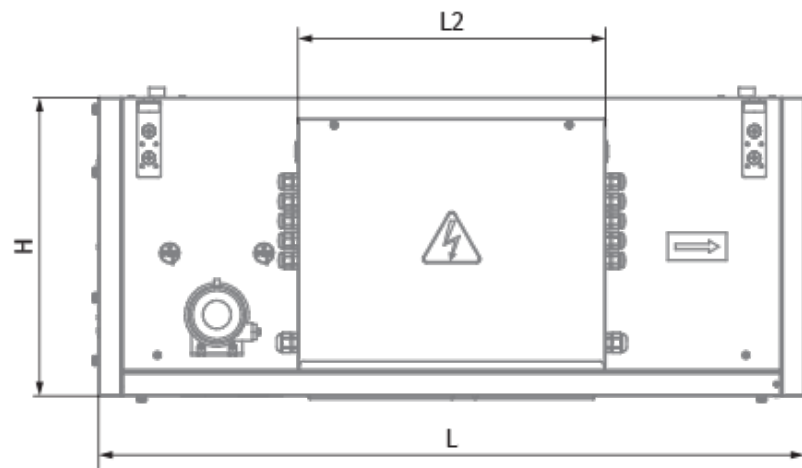
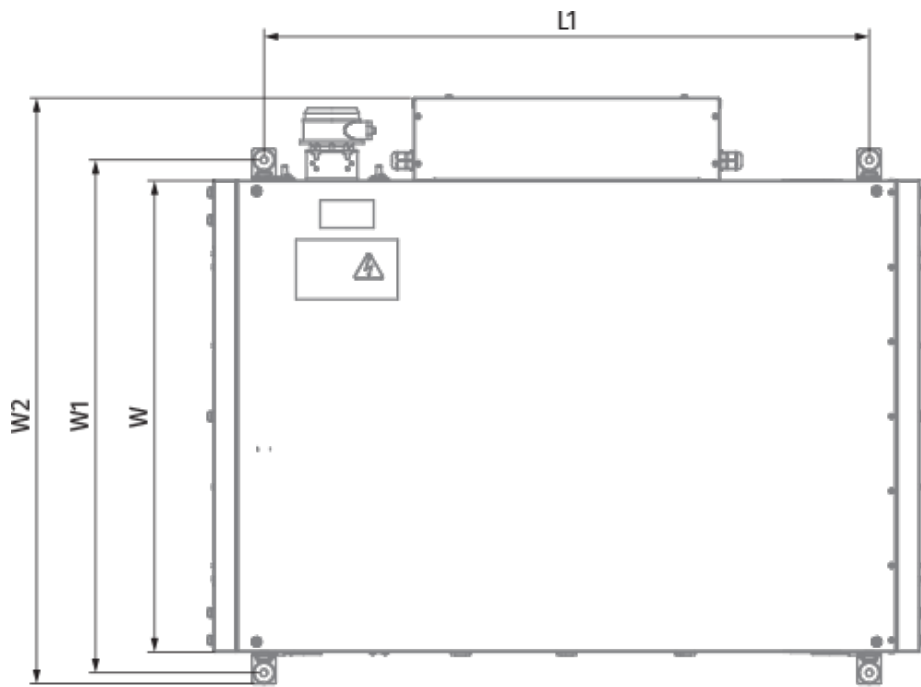


- Power of electrical reheater: 45000
- Maximum airflow: 3150
- Sound pressure level LpA at 3 m: 47
- Filter: Coarse 90% / G4 (option: ePM1 70% / F7)
- Sound insulation
- Motor type: EC
- Reheater: Electric
- BMS protocol: ModBus
- Control: Wired control panel
- Casing material: Aluzinc steel

	Unit of measurement	Blaubox EC ME 3000-45 S31
Connected air duct size	mm	600x300
Phases	-	3
Minimum supply voltage	V	400
Maximum supply voltage	V	400
Power supply frequency	Hz	50
Rated power	W	472
Power of electrical reheater	W	45000
Unit current	A	72.8
Maximum airflow	m ³ /h	3150
Sound pressure level LpA at 3 m	dB(A)	47
Weight	kg	50
Filter	-	Coarse 90% / G4 (option: ePM1 70% / F7)
Transported air temperature (max)	°C	40
Transported air temperature (min)	°C	-30
Ambient air temperature min	°C	1
Ambient air temperature max	°C	40
Ambient air humidity max	%	80
Ingress protection rating	-	IP22
Ingress protection rating of the drive	-	IP44



Dimensions

H	H1	L	L1	W	W1	W2	W3
500	300	1200	1070	800	853	944	600




Accessories

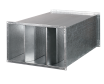
Other accessories

Name	Photo	Description
FP 734x435x80 Coarse 90% / G4		G4 panel filter
FP 734x435x80 ePM1 70% / F7		F7 panel filter


For rectangular ducts

Name	Photo	Description
EVA 60x30		Flexible anti-vibration connectors for rectangular ducts


For rectangular ducts

Name	Photo	Description
SD 60x30		Silencers for rectangular ducts

Airflow regulators

Name	Photo	Description
SL 60x30		Air dampers for rectangular ducts

Electric actuators

Name	Photo	Description
Belimo TF24		Electric actuators

[Belimo TF230](#)



Electric actuators