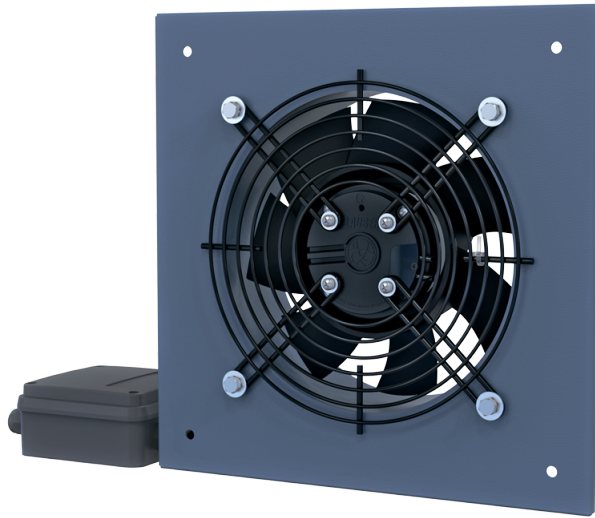


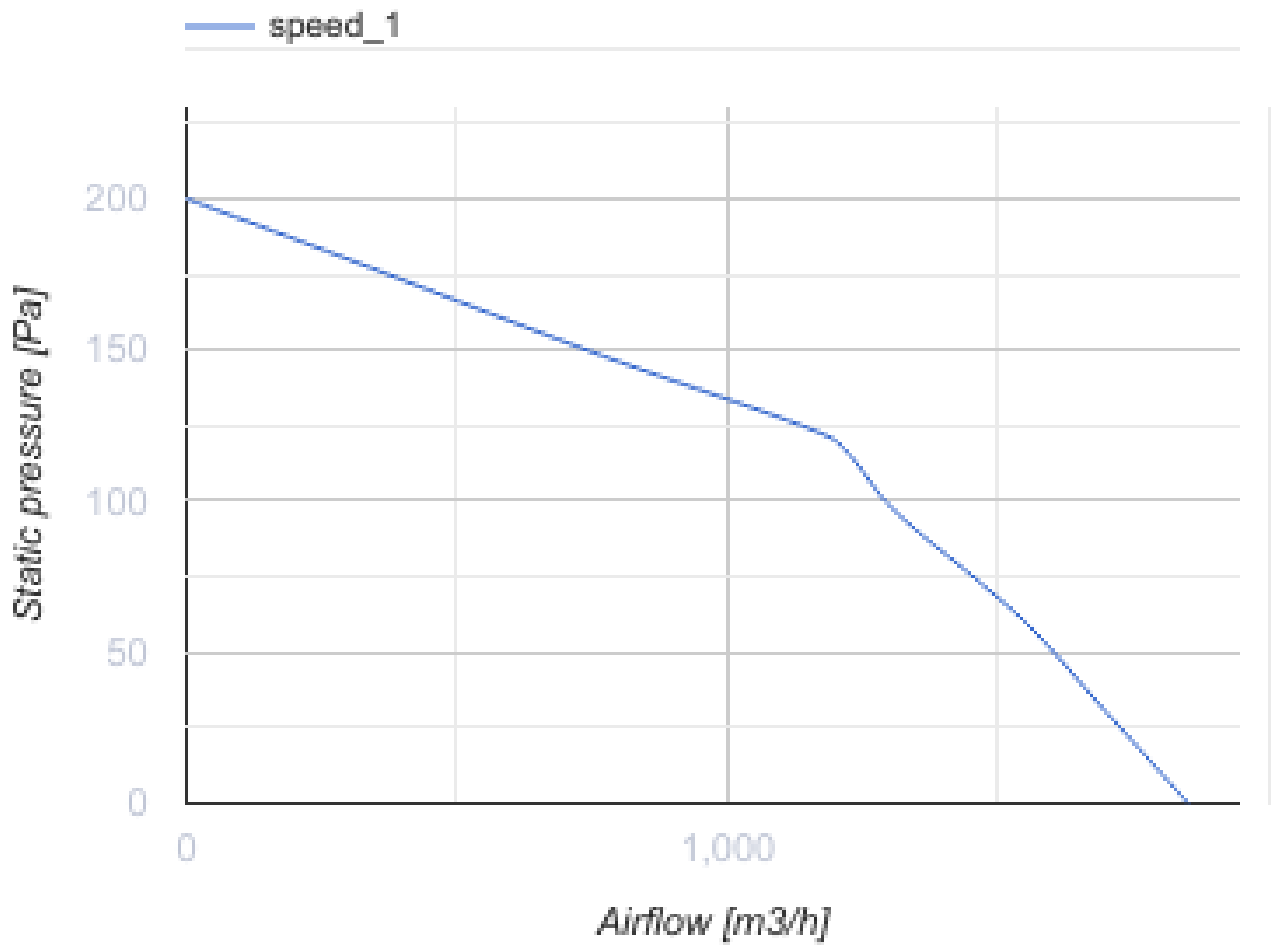
Axis-Q EC 250 max

Wall-mounted axial fans with EC-motors

- Maximum airflow: 1850
- Sound pressure level LpA at 3 m: 57
- Motor type: EC
- Impeller type: Axial
- Casing material: Coated steel



	Unit of measurement	Axis-Q EC 250 max
Phases	-	1
Minimum supply voltage	V	230
Maximum supply voltage	V	230
Power supply frequency	Hz	50/60
Rated power	W	115
Unit current	A	0.85
Maximum airflow	m ³ /h	1850
Sound pressure level LpA at 3 m	dB(A)	57
Weight	kg	2.56
Transported air temperature (max)	°C	60
Transported air temperature (min)	°C	-25
Ingress protection rating	-	IPX5
Ingress protection rating of the drive	-	IP55



Dimensions

ØD	ØD1	Ød	L	L1	W	W1
262	325	7	81	93	370	320

