

# SLIM

## CLASSIC MODELS

### Features



- o Specially designed for exhaust ventilation
- o Wall and ceiling mounting
- o Easy installation and maintenance
- o Continuous operation
- o Backdraft damper
- o Ball bearing motor



**Air flow:**  
up to 305 m<sup>3</sup>/h  
85 l/s



**Power:**  
from 14 W  
**SFP:**  
from 0.28 W/l/s



**Noise level:**  
from 33 dBA



### Options



Model	Slim 100/120/125/150				
	S	T	ST	H	SH
Pull cord switch	•		•		•
Timer		•	•	•	•
Humidity sensor				•	•

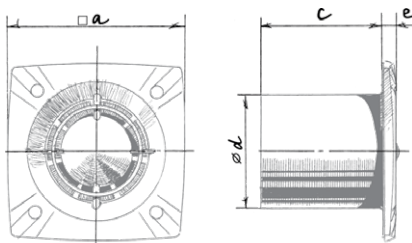
- o Turn-off delay adjustable from 2 to 30 min.
- o Humidity setpoint adjustable from 60 % up to 90 %.

### Technical data

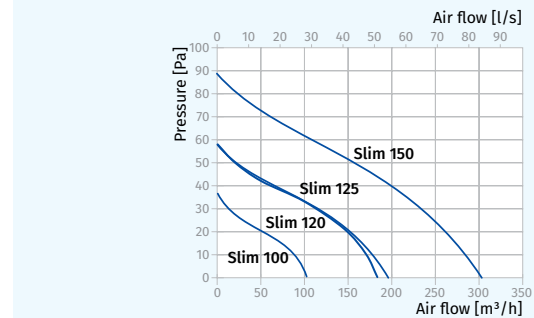
	Slim 100	Slim 120	Slim 125	Slim 150
Voltage [V/Hz]	220-240/50	220-240/50	220-240/50	220-240/50
Power [W]	14	17	16	24
Current [A]	0.085	0.1	0.1	0.13
RPM [min <sup>-1</sup> ]	2300	2400	2400	2400
Maximum air capacity [m <sup>3</sup> /h (l/s)]	105 (29)	184 (51)	190 (53)	305 (85)
SFP [W/l/s]	0.48	0.33	0.30	0.28
Sound pressure level [dBA]*	33	35	34	37
Weight [kg]	0.6	0.73	0.73	0.92

\* Sound pressure level measured in free space at a distance of 3 meters from the fan.

### Overall dimensions and mounting

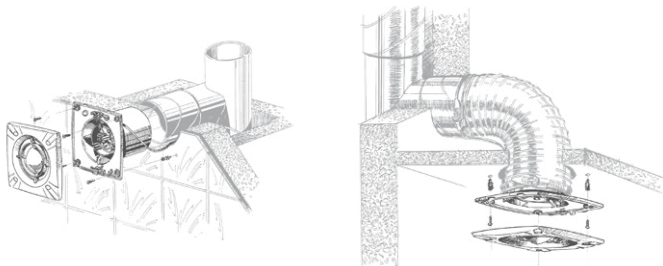


Dimensions [mm]	a	c	∅ d	e
Slim 100	150	87	100	13
Slim 120	176	94	117	13
Slim 125	176	101	125	13
Slim 150	205	118	150	13



### Designation key

Slim	100	SH
Model	Spigot diameter	Option



### Accessories

Duct system	Flexible air ducts	Grilles and hoods	Speed controllers	Clamps
BlauPlast	BlauFlex	Decor, GM	CDT E1.8 MCD 60/0.3	K, KZ