



HEAT RECOVERY AIR HANDLING UNIT EQUIPPED WITH AN ELECTRIC HEATER



KOMFORT Roto EC LE400-2 S17
KOMFORT Roto EC LE700-3.3 S17
KOMFORT Roto EC LE1000-4.5 S17
KOMFORT Roto EC LE1200-6 S17
KOMFORT Roto EC LE1500-9 S17
KOMFORT Roto EC LE2000-12 S17

KOMFORT Roto EC LE400-2 S18
KOMFORT Roto EC LE700-3.3 S18
KOMFORT Roto EC LE1000-4.5 S18
KOMFORT Roto EC LE1200-6 S18
KOMFORT Roto EC LE1500-9 S18
KOMFORT Roto EC LE2000-12 S18

EN

OPERATION MANUAL

CONTENTS

Safety requirements	3
Purpose	5
Delivery set	5
Designation key	5
Technical data	6
Unit design and operating logic	7
Mounting and set-up	8
Connection to power mains	13
Unit control	14
Technical maintenance	15
Fault handling	17
Storage and transportation regulations	17
Manufacturer's warranty	18
Acceptance certificate	19
Seller information	19
Installation certificate	19
Warranty card	19





**THE PRODUCT MUST BE COLLECTED SEPARATELY AT THE END OF SERVICE LIFE.
DO NOT DISPOSE OF AS UNSORTED MUNICIPAL WASTE.**

This user's manual consisting of the technical details, operating instructions and technical specification covers the installation and mounting of the KOMFORT Roto EC LE heat recovery air handling unit (hereinafter referred to as „the unit“).

SAFETY REQUIREMENTS

- Read the user's manual carefully prior to installing and operating the unit.
- Fulfil the user's manual requirements as well as the provisions of all the applicable local and national construction, electrical and technical norms and standards.
- The warnings contained in the user's manual must be considered most seriously since they contain vital personal safety information.
- Failure to follow the rules and safety precautions noted in this user's manual may result in an injury or unit damage.
- After a careful reading of the manual, keep it for the entire service life of the unit.
- While transferring the unit control the user's manual must be turned over to the receiving operator.

Symbol legend:

	WARNING!
	DO NOT!

UNIT MOUNTING AND OPERATION SAFETY PRECAUTIONS



- Disconnect the unit from power mains prior to any installation operations.



- The unit must be grounded!



- Do not lay the power cable of the unit in close proximity to heating equipment.



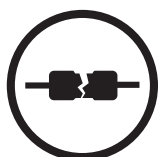
- While installing the unit follow the safety regulations specific to the use of electric tools.



- Do not change the power cable length at your own discretion.
- Do not bend the power cable.
- Avoid damaging the power cable.
- Do not put any foreign objects on the power cable.



- Unpack the unit with care.



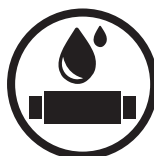
- Do not use damaged equipment or cables when connecting the unit to power mains.



- Do not operate the unit outside the temperature range stated in the user's manual.
- Do not operate the unit in aggressive or explosive environments.



- Do not touch the unit controls with wet hands.
- Do not carry out the installation and maintenance operations with wet hands.



- Do not wash the unit with water.
- Protect the electric parts of the unit against ingress of water.

UNIT MOUNTING AND OPERATION SAFETY PRECAUTIONS



- Do not allow children to operate the unit.



- Disconnect the unit from power mains prior to any technical maintenance.



- Do not store any explosive or highly flammable substances in close proximity to the unit.



- When the unit generates unusual sounds, odour or emits smoke disconnect it from power supply and contact the Seller.



- Do not open the unit during operation.



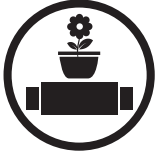
- Do not direct the air flow produced by the unit towards open flame or ignition sources.



- Do not block the air duct when the unit is switched on.



- In case of continuous operation of the unit periodically check the security of mounting.



- Do not sit on the unit and avoid placing foreign objects on it.



- Use the unit only for its intended purpose.

PURPOSE

Due to the ability to save heating energy by means of energy recovery the unit is an important element of energy-efficient premises. The unit is a component part and is not designed for independent operation.

The unit is designed to provide permanent controlled air exchange by means of mechanical ventilation in houses, offices, hotels, cafés, meeting halls and other mechanically ventilated premises as well as utilization of extract air heat energy to warm up supply purified air.

The unit is designed for floor and suspended mounting.

The unit is rated for continuous operation.

Transported air must not contain any flammable or explosive mixtures, evaporation of chemicals, sticky substances, fibrous materials, coarse dust, soot and oil particles or environments favourable for the formation of hazardous substances (toxic substances, dust, pathogenic germs).



THE UNIT MAY NOT BE OPERATED BY CHILDREN OR PERSONS WITH REDUCED PHYSICAL, MENTAL OR SENSORY CAPACITIES, OR LACKING THE APPROPRIATE TRAINING.

THE UNIT MUST BE INSTALLED AND CONNECTED ONLY BY PROPERLY QUALIFIED PERSONNEL AFTER THE APPROPRIATE BRIEFING.

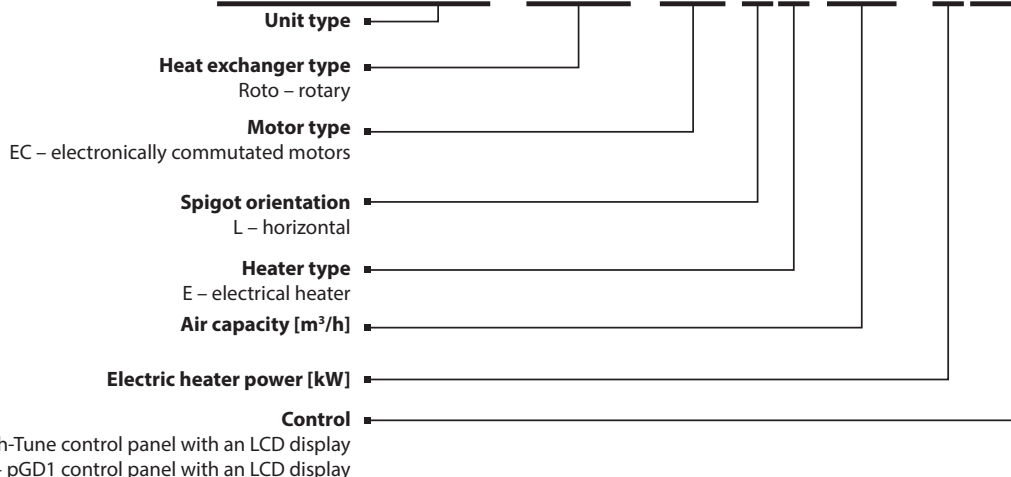
THE CHOICE OF UNIT INSTALLATION LOCATION MUST PREVENT UNAUTHORIZED ACCESS BY UNATTENDED CHILDREN.

DELIVERY SET

Name	Quantity
Air handling unit	1 item
Control panel	1 item
User's manual	1 item
Packing box	1 item

DESIGNATION KEY

KOMFORT Roto EC LE400-2 S17



TECHNICAL DATA

The unit is designed for indoor application with the ambient temperature ranging from +1 °C up to +40 °C and relative humidity up to 80 %. Hazardous parts access and water ingress protection rating:

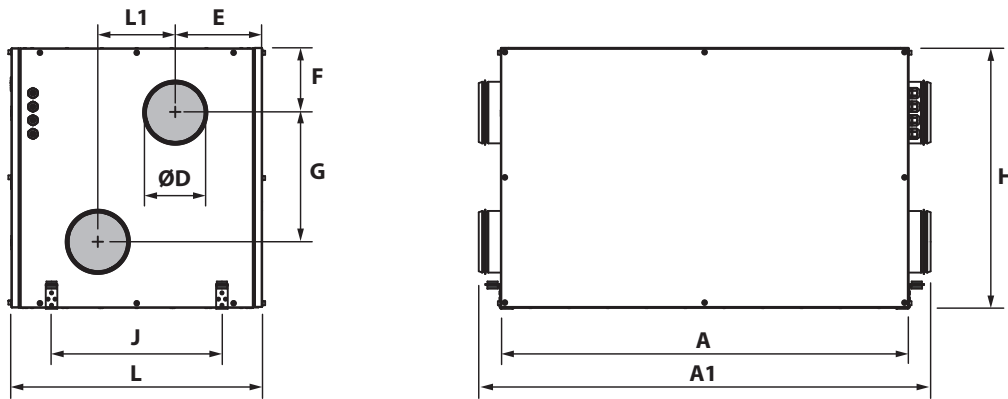
- IP44 for the unit motors
- IP22 for the assembled unit connected to the air ducts.

The unit design is constantly being improved, so some models can slightly differ from those ones described in this manual.

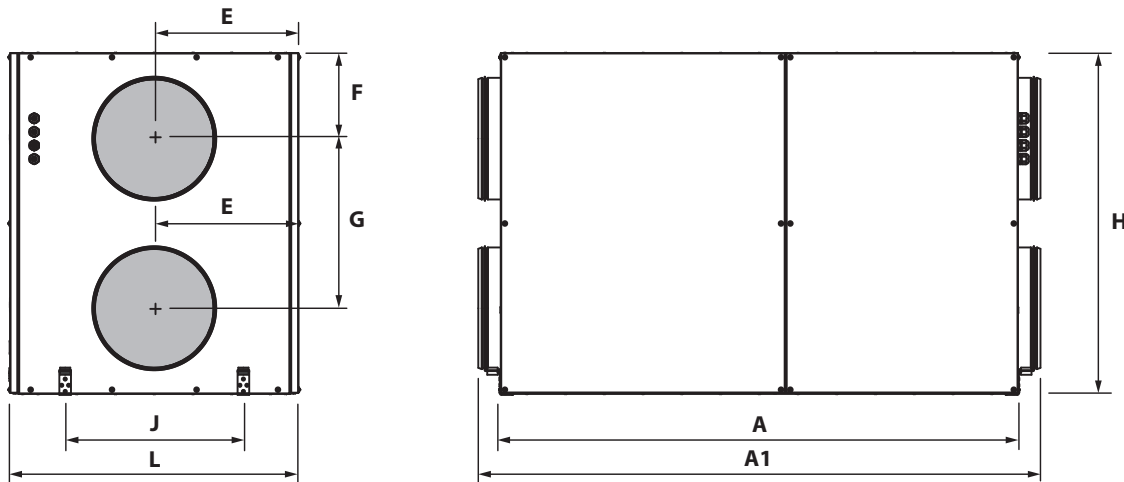
TECHNICAL DATA

	KOMFORT Roto EC LE400-2	KOMFORT Roto EC LE700-3.3	KOMFORT Roto EC LE1000-4.5	KOMFORT Roto EC LE1200-6	KOMFORT Roto EC LE1500-9	KOMFORT Roto EC LE2000-12
Voltage [V / Hz]	1~ 220-240 / 50-60		3~ 400 / 50-60			
Maximum fan power [W]	2 items x 100	2 items x 105	2 items x 135	2 items x 208	2 items x 222	2 items x 448
Electric heater power [kW]	2.0	3.3	4.5	6.0	9.0	12.0
Total unit power [W]	2290	3615	4940	6570	9750	13070
Total unit current [A]	9.9	15.8	7.2	9.5	14.1	22.4
Maximum air capacity [m³/h]	400	700	900	1200	1500	2250
RPM	up to 3100	up to 2600	up to 2600	up to 1930	up to 2000	up to 3000
Sound pressure level at 3 m distance [dB(A)]	45	52	58	60	62	64
Maximum transported air temperature [°C]	-25...+60					
Casing material	aluzinc					
Insulation	20 mm mineral wool				25 mm mineral wool	
Filter:	extract	G4				
	intake	G4				
Connected air duct diameter [mm]	Ø160	Ø250	Ø250	Ø315	Ø315	500x300
Weight [kg]	112	128	130	165	175	198
Heat recovery efficiency [%]	up to 85					
Heat exchanger type	rotary					
Heat exchanger material	aluminium					

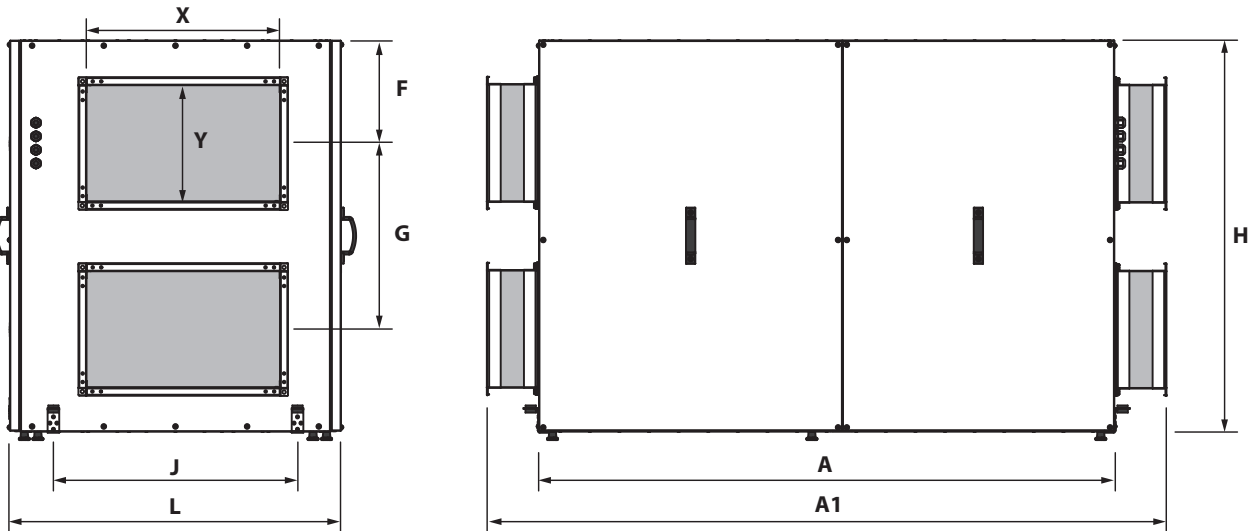
KOMFORT Roto EC LE400-2 | KOMFORT Roto EC LE700-3.3 | KOMFORT Roto EC LE1000-4.5



KOMFORT Roto EC LE1200-6 | KOMFORT Roto EC LE1500-9



KOMFORT Roto EC LE2000-12



Unit model	Dimensions [mm]											
	øD	A	A1	E	F	G	L	L1	H	J	X	Y
KOMFORT Roto EC LE400-2	159	1050	1167	225	167	333	648	200	670	440	-	-
KOMFORT Roto EC LE700-3.3	249	1210	1326	243	180	340	745	260	700	580	-	-
KOMFORT Roto EC LE1000-4.5	249	1210	1326	243	180	340	745	260	700	580	-	-
KOMFORT Roto EC LE1200-6	314	1335	1450	373	220	438	745	-	880	460	-	-
KOMFORT Roto EC LE1500-9	314	1430	1535	427	275	460	855	-	1010	560	-	-
KOMFORT Roto EC LE2000-12	-	1485	1754	-	275	480	875	-	1010	630	500	300

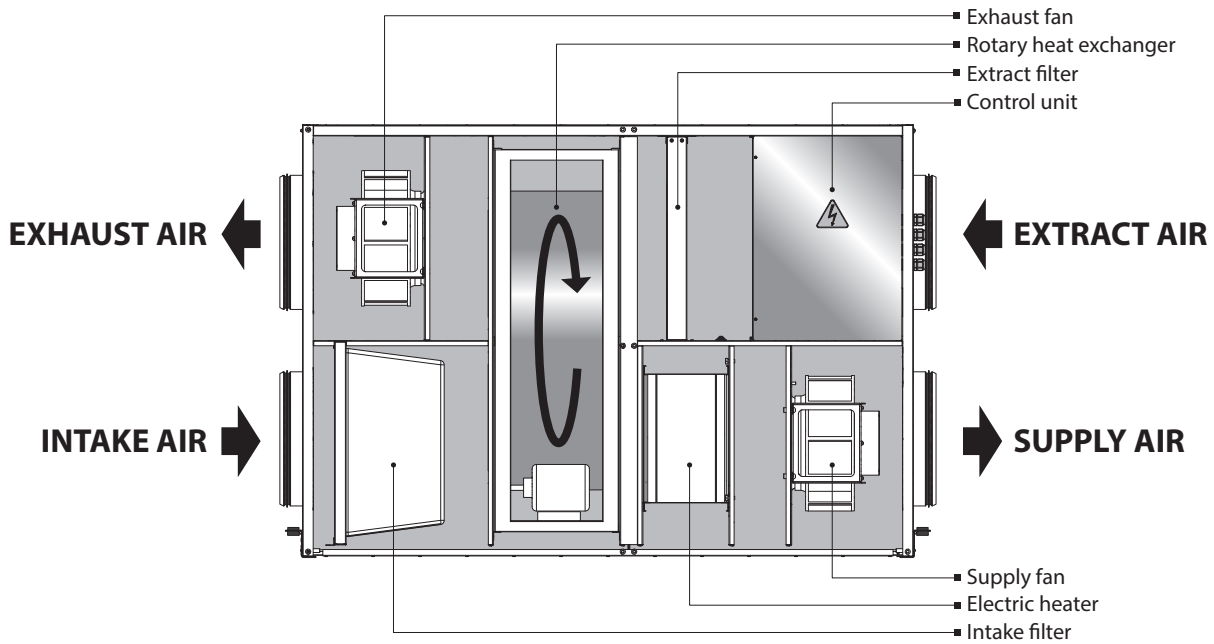
UNIT DESIGN AND OPERATING LOGIC

The unit has the following operating logic:

Warm stale extract air from the room flows to the unit, where it is filtered by the extract filter. Then the air is moved through the rotary heat exchanger and is exhausted outside with the exhaust fan. Clean cold air from outside is moved to the intake filter. Then filtered air flows through the rotary heat exchanger and the electric heater where it is warmed up to the pre-set temperature value and is moved to the room with the supply fan.

Heat energy of warm extract air is transferred to clean intake fresh air from outside and warms it up in the rotary heat exchanger. Heat recovery minimizes thermal energy losses and space heating expenses in cold seasons.

**UNIT OPERATION LOGIC
(SERVICE SIDE VIEW)**



The unit is a framework construction that includes a frame made of rigidly fixed sandwich panels. The three-layer sandwich panels are made of aluminium and galvanized sheets, internally filled with heat- and sound-insulated mineral wool.

The air handling unit is equipped with quick-detachable service panels for scheduled repair and maintenance operations.

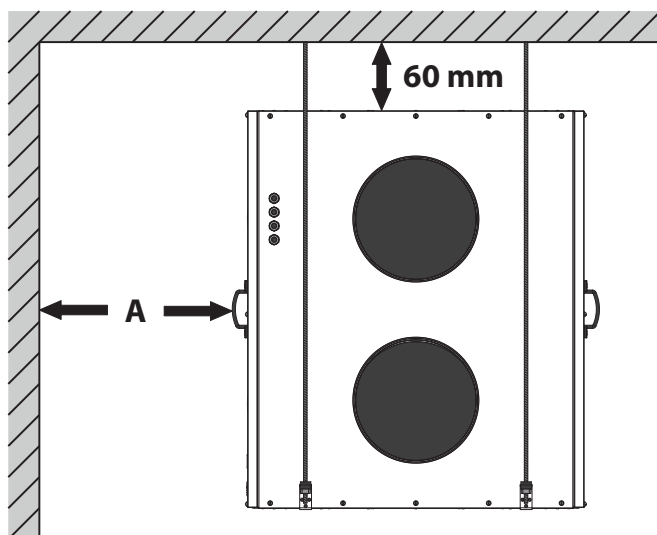
Route a power and a ground cable through the screwed cable glands to connect those to the terminal block located in the control unit. The wiring diagram is shown on the inner side of the control unit cover.

MOUNTING AND SET-UP

While mounting the unit provide enough access for maintenance or repair work. The minimum recommended clearances between the unit and the adjoining walls are given in the figure below.

Before starting the unit make sure that the rotary heat exchanger cells are clean and free from damage. Check the belt tension. The tension force is regulated by the spring on the motor suspension mount.

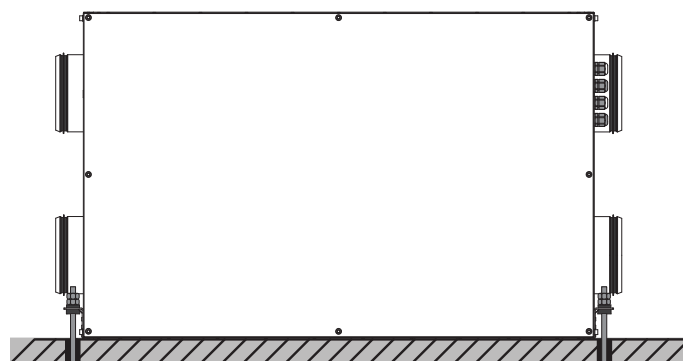
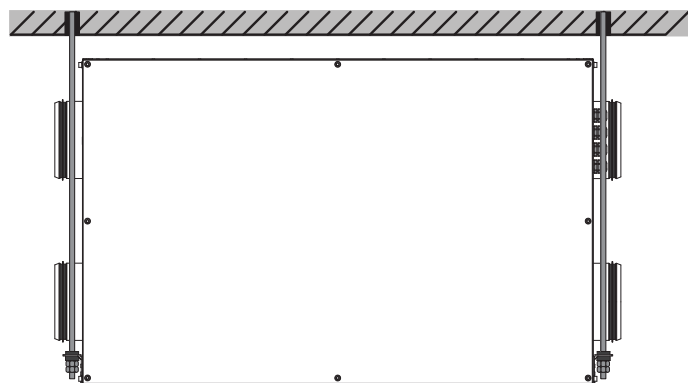
The unit may be suspended on a threaded rod that is fixed inside a dowel or may be rigidly fixed on a horizontal plane.



SUSPENDED MOUNTING

Model	A, mm
KOMFORT Roto EC LE400-2	800 mm
KOMFORT Roto EC LE700-3.3	900 mm
KOMFORT Roto EC LE1000-4.5	
KOMFORT Roto EC LE1200-6	1000 mm
KOMFORT Roto EC LE1500-9	
KOMFORT Roto EC LE2000-12	

UNIT MOUNTING ON A HORIZONTAL PLANE



To attain the optimal performance of the unit and to minimise turbulence-induced air pressure losses connect a straight air duct section on both sides of the unit while mounting.

Minimum straight air duct length:

- equal to 1 air duct diameter on intake side
- equal to 3 air duct diameters on outlet side

If the air ducts are not connected or the connected air ducts are too short, protect the unit parts from ingress of foreign objects by covering the spigots with a protecting grille or other protecting device with mesh width not more than 12.5 mm to protect internal parts of the unit against penetration of foreign objects.

SAFETY PRECAUTIONS

The unit must be mounted to a rigid and stable structure.

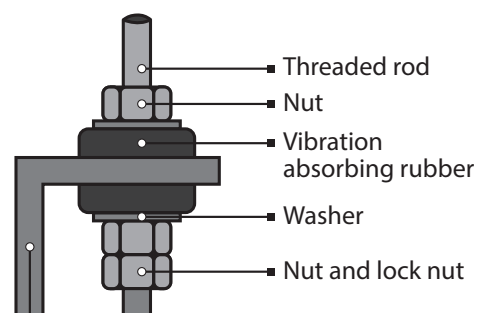
The unit must be suspended using anchor bolts. Make sure that the base structure is capable of sustaining the unit weight. Otherwise reinforce the mounting location with beams or similar elements.

If the bolts used for the unit mounting are too short the unit can generate abnormal noise and resonate with the ceiling. Use bolts of sufficient length to prevent resonance.

If the abnormal noise is generated at the spiral air duct joint replace the spiral air duct with a flexible one to prevent resonance. Flexible anti-vibration connectors are another alternative for dealing with resonance.

UNIT MOUNTING

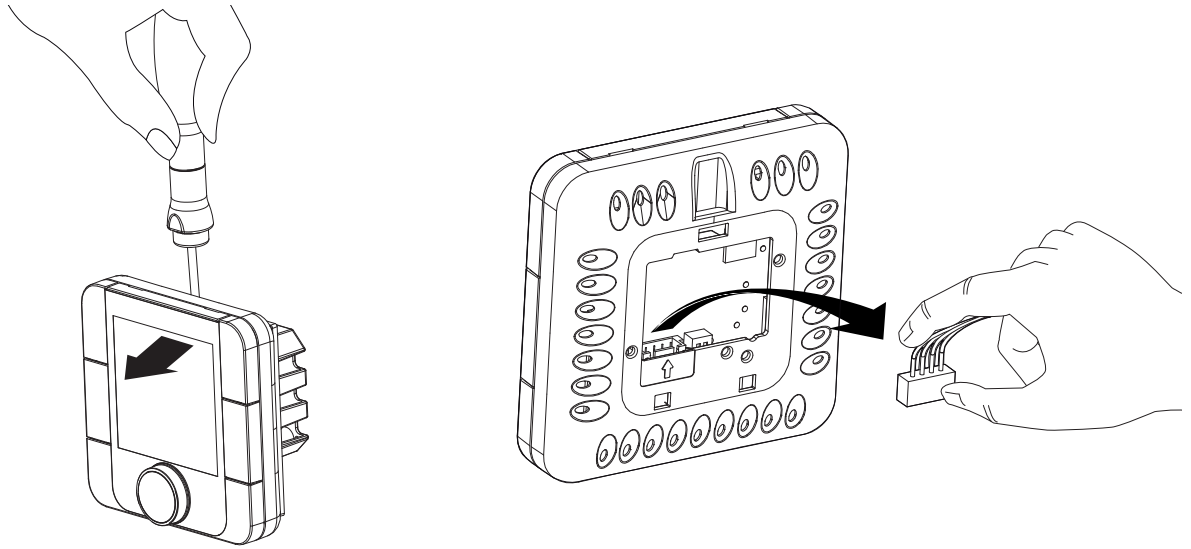
Install M8 anchor bolts before proceeding with the installation. Insert the anchor bolt into the suspended mounting opening and secure it with nuts and washers. The unit mounting example is shown in the illustration on the right.



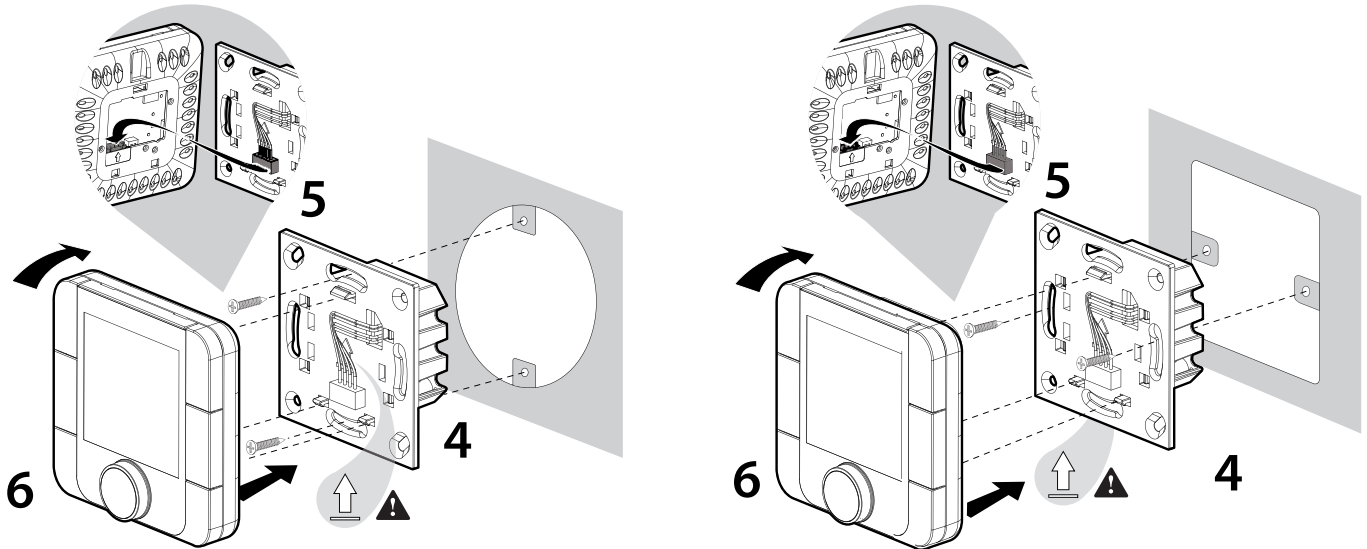
TH-TUNE CONTROL PANEL INSTALLATION

To install the rear part of the control panel use a suitable mounting box (minimum diameter 65 mm and minimum depth 31 mm).

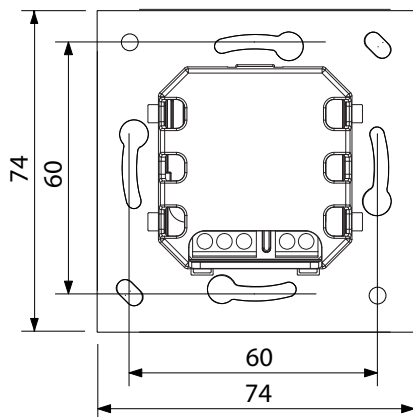
1. Use a screwdriver to pull the front and the rear sides of the control panel apart.
2. Disconnect the 4-pin socket from the front part of the control panel.



3. Complete the electrical connections according to the external wiring diagram (Page 12).
4. Secure the rear part of the control panel in the mounting box using the screws supplied.
5. Reattach the 4-pin connector.
6. Lay all the cables and install the control panel starting from the bottom. Make sure that none of the internal wires prevent closing with a click.



Outline dimensions of the control panel rear part, mm



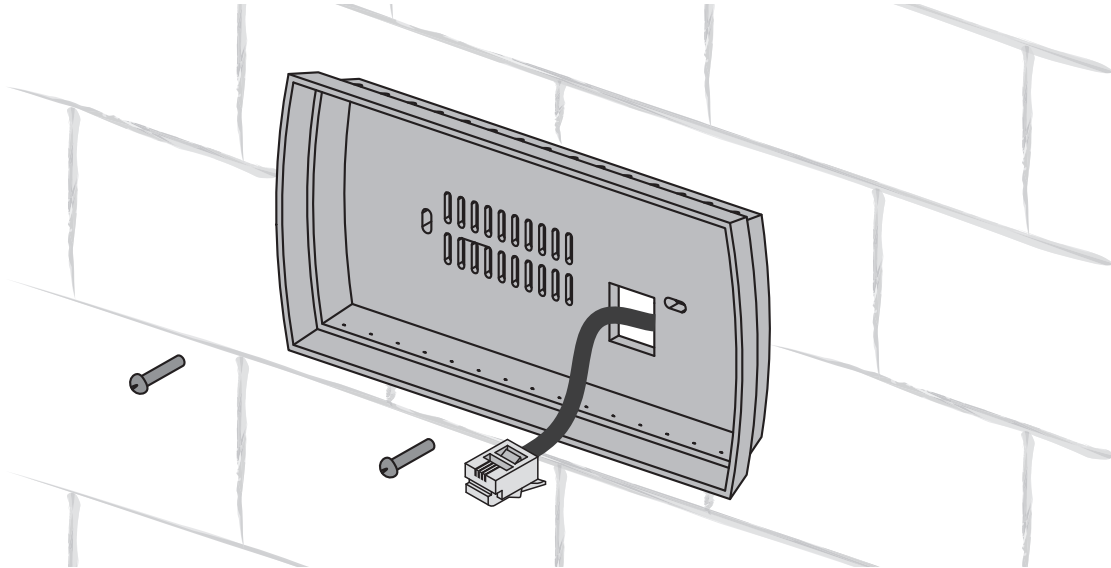
The outline drawing of the control panel rear part is on the left.

PGD1 CONTROL PANEL INSTALLATION

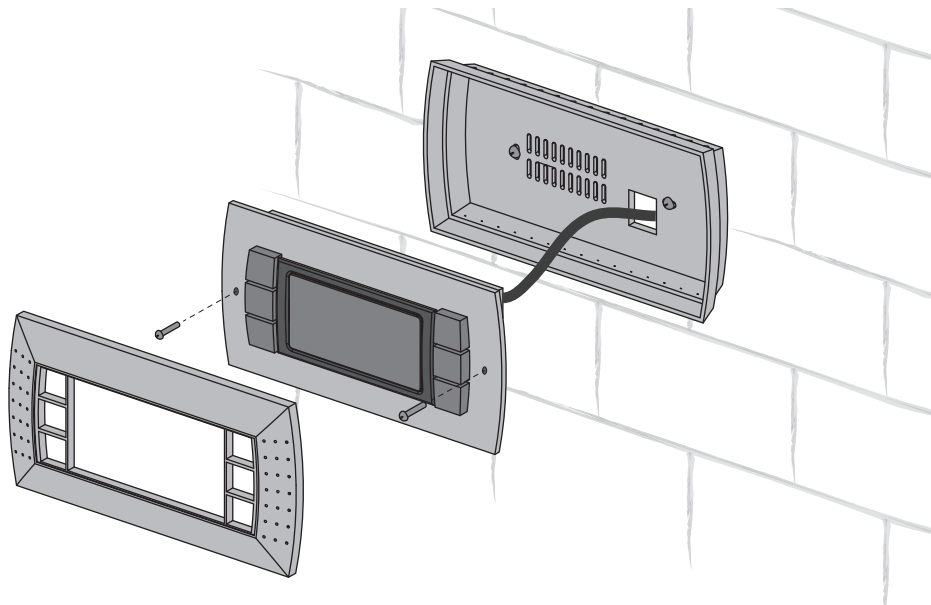
Connect the pGD1 control panel to the controller connector (see figure on page 13) using the 6P6C (PLUG-6P6C-P-C2) phone plug. The maximum length of the phone cable is 50 m.

To mount the control panel on a wall route the phone cable to the selected location.


1. Secure the rear part of the casing in the standard box by means of the round-head screws supplied.



2. Connect the phone cable to the front part of the control panel. Install the front part of the control panel into the box by fastening it to the rear part of the casing with countersunk screws supplied as shown in the figure below and then install the front bezel by pushing it until it clicks in position.



CONNECTION TO POWER MAINS



DISCONNECT THE UNIT FROM POWER SUPPLY PRIOR TO ANY OPERATIONS WITH THE UNIT.

CONNECTION OF THE UNIT TO POWER MAINS IS ALLOWED BY A QUALIFIED ELECTRICIAN WITH A WORK PERMIT FOR THE ELECTRIC UNITS UP TO 1000 V AFTER CAREFUL READING OF THE PRESENT USER'S MANUAL.

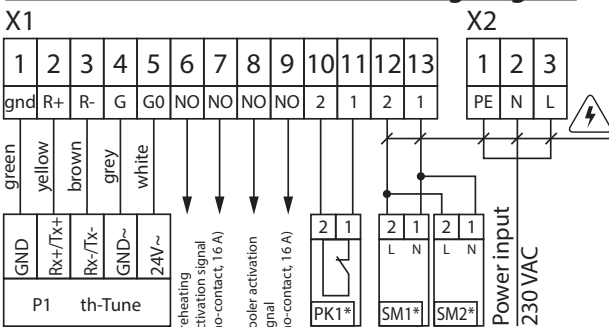
THE RATED ELECTRICAL PARAMETERS OF THE UNIT ARE GIVEN ON THE MANUFACTURER'S LABEL. ANY TAMPERING WITH THE INTERNAL CONNECTIONS IS PROHIBITED AND WILL VOID THE WARRANTY.

The unit is rated for connection to single-phase alternating current power mains with a voltage of 230 V/50/60 Hz for KOMFORT Roto EC LE400 and KOMFORT Roto EC LE700 and to three-phase power mains with a voltage of 400 V/50/60 Hz for KOMFORT Roto EC LE1000, KOMFORT Roto EC LE1200, KOMFORT Roto EC LE1500 and KOMFORT Roto EC LE2000. The connection must be made using durable, insulated and heat-resistant cables with a minimum cross-section of 2.5 mm² (up to 50 m long). The cable cross-section is given for reference only. The actual conductor cross-section selection must be based on its type, the maximum permissible heating, insulation, length and installation method. Use copper cables only.

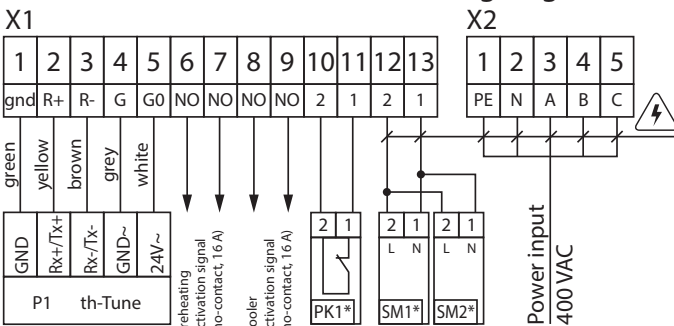
Connect the unit to power mains through the terminal block which is located in the control unit in compliance with the wiring diagram and the terminal marking.

Connect the unit to power mains through the external automatic circuit breaker with a magnetic trip integrated into the fixed wiring system. The trip current of the automatic circuit breaker must correspond to the current consumption (see the table on page 6).

KOMFORT Roto EC LE400-700 wiring diagram



KOMFORT Roto EC LE1000-2000 wiring diagram



Design.	Name	Model	Wire**
SM1*	Supply or exhaust air damper electric actuator	LF230	2x0,75 mm ²
SM2*	Supply or exhaust air damper electric actuator	LF230	2x0,75 mm ²
PK1*	Contact from fire alarm panel	NC	2x0,75 mm ²
P1	Control panel	th-Tune	

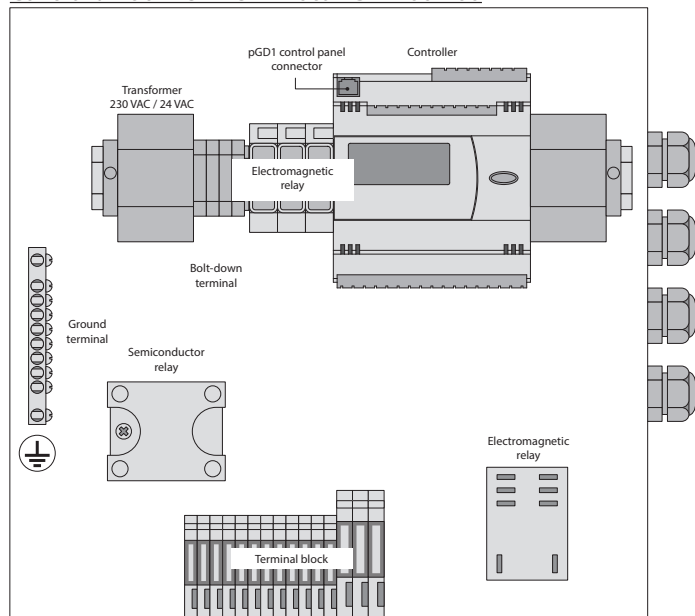
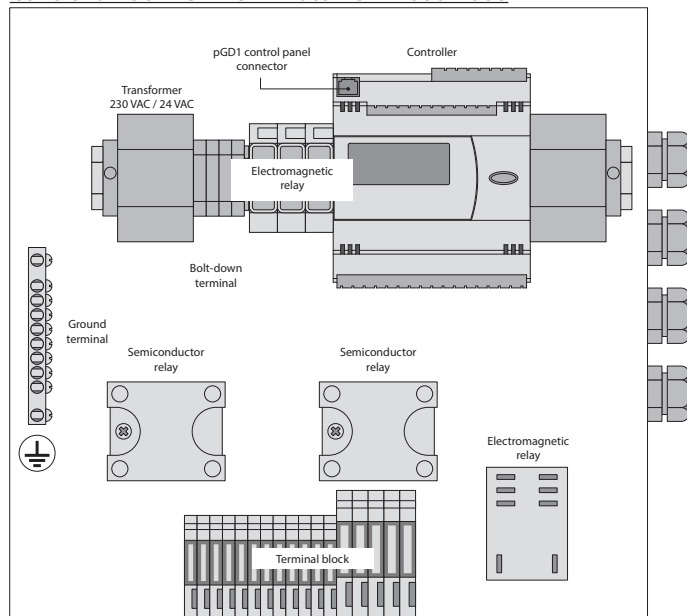
* - Devices are not included into delivery set, but can be delivered according to the order.
 ** - Wire cross-section at a cable length of maximum 100 m.

Maximum cable length from controller to control panel

Cable type	Distance to power source
Phone cable	up to 50 m
AWG24 shielded cable	up to 200 m

UNIT CONTROL

The unit is equipped with a built-in automatic control system and a control panel.

Control unit of KOMFORT Roto EC LE400-700**Control unit of KOMFORT Roto EC LE1000-2000****The automatic control system has the following functions:**

1. Turning the unit on/off.
2. Unit operation mode selection: Automatic mode, Ventilation mode (can be enabled only from the pGD1 control panel).
3. Maintaining a pre-set room temperature by activating/deactivating the rotary heat exchanger as well as setting a required electric heater heating capacity and its smooth controlling.
4. Automatic reduction of the supply and exhaust ventilation air flow rate to obtain the user-defined heating temperature.
5. Supply and exhaust fan control.
6. Unit operation according to a pre-programmed schedule.
7. Controlling the electric actuators of the external supply and exhaust air dampers.
8. System shutdown on signal from fire fighting system.
9. When connecting electrical heating elements of preheating and/or CCU to the unit the activation signal controls their operation if cooling/heating is required.
10. Filter contamination control by the number of operating hours.
11. Overheating control of electric heating elements.

AUTOMATIC CONTROL SYSTEM DESIGN AND OPERATION

The automatic control system comprises a Carel controller (PCO5 kompakt), an outdoor air temperature sensor, a supply air temperature sensor, a sensor for the air temperature in the exhaust duct, a room temperature sensor, relays, circuit breakers and a supply transformer.

The unit is controlled via th-Tune or PGD1 control panel.

The automatic control system enables safe automatic operation of the unit in the Auto or Ventilation mode (only with the pGD1 control panel). In the Auto mode the unit maintains the indoor temperature at the pre-set level by controlling the heater operation. While in the Ventilation mode the unit adjusts the supply and exhaust fan speed, but does not control the air temperature. The Ventilation mode is appropriate for energy saving and ventilation if the difference between the outdoor and indoor temperatures is insignificant.

The supply and exhaust fan speed is set for each speed stage as a percentage from the maximum rotation speed.

The temperature is set up by changing the „Setpoint“ parameter value.

The fans can be operated according to a daily schedule (up to 4 time ranges).

The Automatic Speed Drop mode is enabled when the air temperature is low. In this mode the fan speed is adjusted according to the supply air temperature. The speed is reduced at temperature dropping and is restored to the initial setting provided a sufficient temperature reserve.

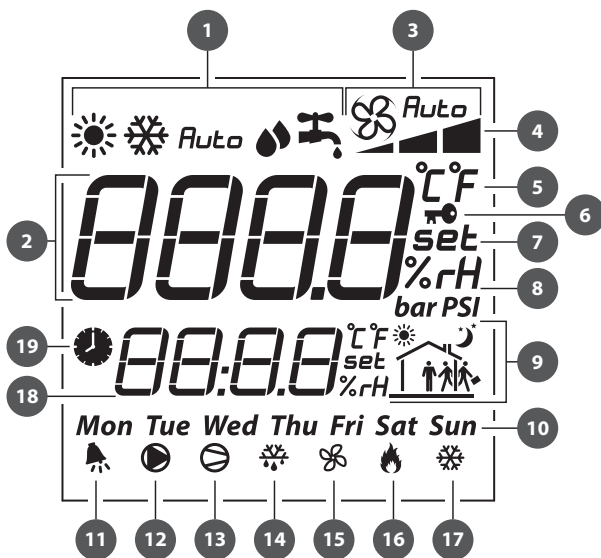
UNIT CONTROL PANELS

The unit is controlled via the th-Tune or pGD1 control panels.

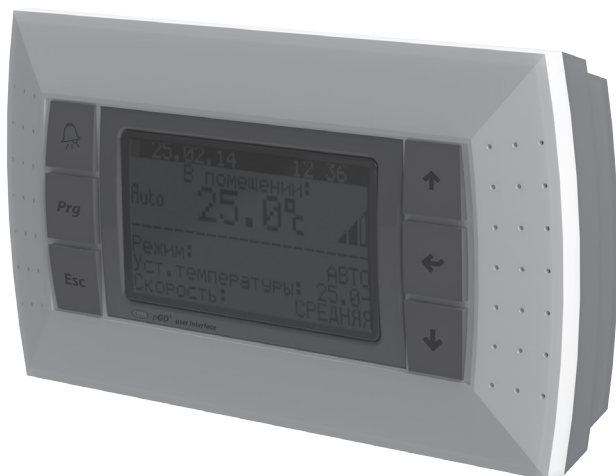


th-Tune

Button	Functions
mode	Operation mode selection: set the operation mode according to the procedure described on Page 17.
	Fan speed selection: set the desired speed level (Low, High or Medium). While the Automatic Speed Drop mode is enabled the fan speed is set automatically to maintain the supply air temperature above the threshold level.
	Time range on/off: short pressing. Activation is confirmed by a pictogram . Access to the clock/time range setup menu: press and hold for 3 seconds. Use the rotary knob to choose the necessary option: setting the current date/time: starts blinking. Turn the knob to make the desired setting and press to confirm. TIMEBAND: setting the time range. Press to set the start time and the corresponding temperature setpoint for each time range individually (you may create up to six time ranges). The pictograms show the current time of a day status (i.e. Day/ Night) and the presence or absence of inhabitants in the serviced spaces. Press ESC to exit and return to the standard display mode. ESC: exit. After 10 seconds th-Tune returns to the main menu automatically.
	Unit activation/deactivation; in some menus a short pressing has the same function as ESC.
	Enter the desired value and press to confirm.



Display pictograms:	
1.	Operation mode.
2.	Main field.
3.	Fan mode: Manual/Auto.
4.	Fan speed indicator.
5.	Temperature measurement unit.
6.	Lock function.
7.	Setpoint value.
8.	Disabled.
9.	Current time range.
10.	Day of the week.
11.	„Alarm“ signal.
12.	Disabled.
13.	Cooler operation enable signal.
14.	Disabled.
15.	Fan operation signal.
16.	Electric heating elements operation enable signal.
17.	Disabled.
18.	Auxiliary field.
19.	Unit scheduled operation enabled.



pGD1

Connect the pGD1 control panel to the controller connector (see figure on page 13) using the 6P6C (PLUG-6P6C-P-C2) phone plug. The maximum length of the phone cable is 50 m.

The pGD1 offers extended functionality and has identical settings entered via the controller screen (see „Controller functions and menu“).

The main page of the control panel menu displays the following information:

- date and current time
- indoor temperature (the temperature registered by sensors can be browsed by pressing the „Up“ and „Down“ buttons: outdoor and supply air temperature, the temperature downstream of the heat exchanger and in the exhaust air duct)
- unit operation mode
- set-point temperature value
- selected speed
- scheduled operation status (on/off)

The main page enables access to the user or engineering menu containing extended information specific to the unit operation and detailed parameters for adjustment.

PLAN NETWORK CONFIGURATION WHILE USING AN EXTERNAL CONTROL PANEL (pGD1).

To enable interaction with the control panel boot up the controller in the pLan mode and assign the following pLan addresses to the controller and the control panel:

Controller – 1;

Control panel (pGD1) – 30, 31 or 32 (factory default value).

SETTING PLAN ADDRESS FOR THE CONTROL PANEL (pGD1).

1. Connect the control panel to the controller and power up the controller.
2. Ignore any information which might show on the display screen and simultaneously press the „Up“, „Down“ and „Enter“ buttons and hold them for 3–5 seconds. After this time the message „Display address setting.....32“ appears on the display screen.
3. Move the cursor to the address setting field using the „Enter“ button. Use the „Up“ and „Down“ buttons to set the desired address value and press „Enter“.

SETTING CONTROLLER PLAN ADDRESS VIA THE BUILT-IN CONTROL PANEL.

1. Power off the controller.
2. Power up the controller and immediately press the „Up“ and „Alarm“ buttons simultaneously. Hold the buttons pressed until the controller page appears on the screen (wait for about 15 seconds):

```
pLan address: 0
UP: increase
DOWN: decrease
ENTER:save & exit
```

3. Use the „Up“ and „Down“ buttons to set the device address to 1.
4. Press the „Enter“ button within 10 seconds to confirm. Failure to press the button within 10 seconds will cause the controller to close the address setting page automatically while keeping the original address value.
5. Upon confirmation the controller will restart with a new pLan address automatically.

SETTING CONTROLLER PLAN ADDRESS VIA pGD1 CONTROL PANEL.

To set the controller address use the pGD1 panel to set the control panel (dGD1) address to 0. To do this follow the steps described in „**SETTING PLAN ADDRESS FOR THE CONTROL PANEL (pGD1)**“ paragraph above. Upon setting the control panel address to zero by using the respective buttons on the external control panel follow the steps described in „**SETTING CONTROLLER PLAN ADDRESS VIA THE BUILT-IN CONTROL PANEL**“ paragraph.

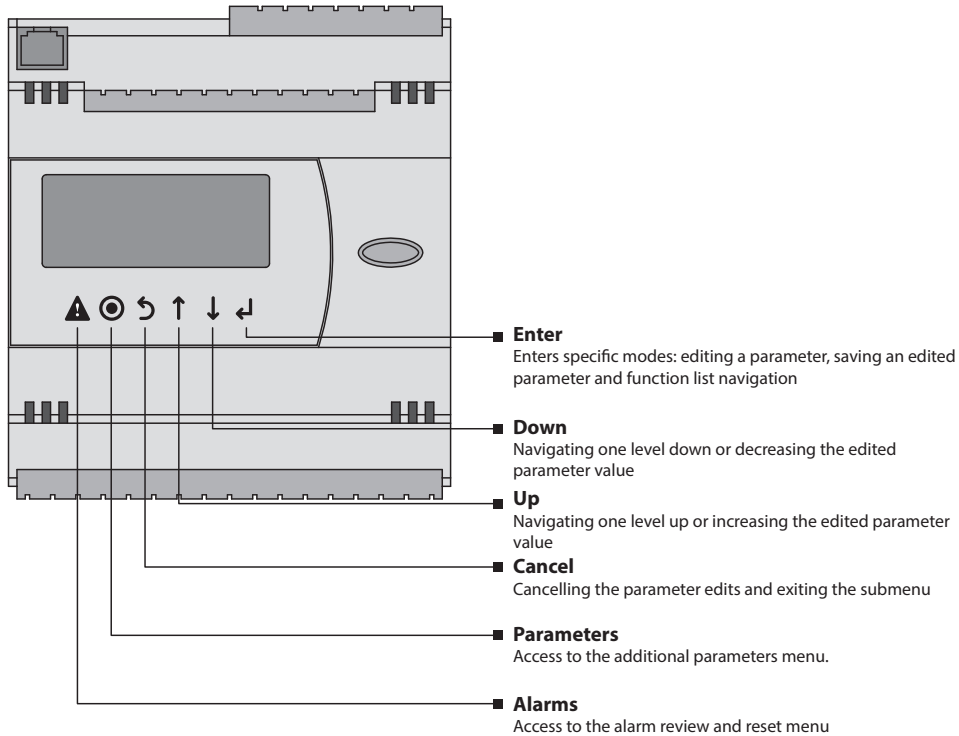
After setting the controller address set the pLan address of the control panel (pGD1) to 30, 31 or 32.


CONTROLLER FUNCTIONS AND MENU

The controller has the following controls and indicators:




Backlit LCD display. The display screen shows the current parameters of the system operation, temperature values, pre-set parameters and alarms.

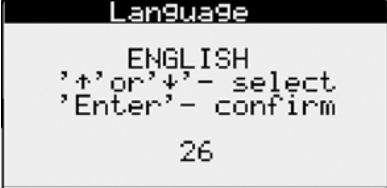
Control buttons of the automatic control system:




 **THE SERVICE SETTINGS ARE PROGRAMMED AT THE FACTORY. THESE SETTINGS MAY BE CHANGED ONLY BY QUALIFIED SPECIALISTS UPON ENTERING THE SERVICE PASSWORD. CHANGING OTHER PARAMETERS DOES NOT REQUIRE A SERVICE PASSWORD.**

UNIT START

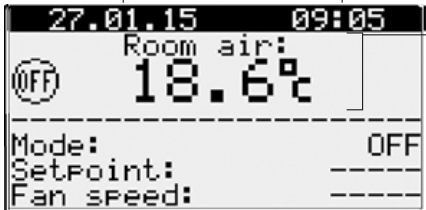
1. Upon starting the unit choose the controller interface language by using the  and  buttons and then press .








2. Once the interface language has been selected, the controller firmware will load.






MAIN MENU



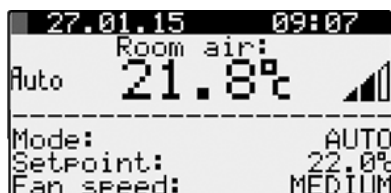
- **Current date**
- **Current time**
- **Current temperatures**
Room temperature
Downstream of the heat exchanger
Outside temperature
Supply air
- **Unit operation mode**
OFF
Ventilation
Heating
Cooling
Auto
Schedule
- **The temperature value for the selected mode**
- **Fan speed level**
Low
Medium
High

To modify the unit operation parameters move the cursor to the required line using the  button. Then use the  and  buttons to set the desired value and then press the  to confirm. To exit the parameter change mode without saving the changes press the  button.

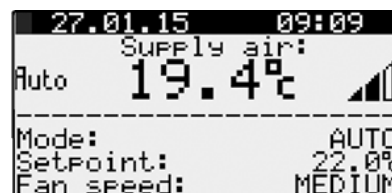
VIEWING THE READINGS FROM THE TEMPERATURE SENSORS

To view the readings from the temperature sensors installed in the unit move the cursor to the upper left corner by means of the  button and then use the  and  buttons to select the necessary sensor for viewing.

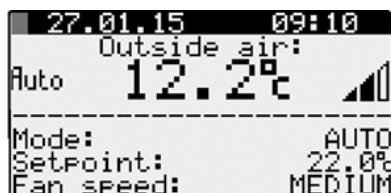
1. Room temperature. The feedback is provided by the temperature sensor built into the control panel or the exhaust duct temperature sensor.







2. Supply air temperature. The feedback is provided by the temperature sensor built into the supply duct downstream of the heat exchanger and the electric heater.



3. Outside air temperature. The feedback is provided by the temperature sensor built into the supply duct upstream of the heat exchanger.



UNIT OPERATION MODE SELECTION

The unit has 4 operation modes. To select the desired mode set the cursor at the „Mode“ word by using the  button. Then use the  and  buttons to set the desired value and then press the  to confirm.

1. OFF — the fans and the heat exchanger are disabled. Temperature and speed settings are not available.



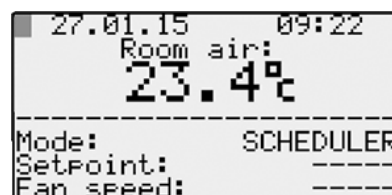
2. FAN — the fans run at the pre-selected speed. The heat exchanger and the electric heater are disabled. The temperature settings are not available. This mode can be enabled only from the pGD1 control panel.



3. Auto — the fans, the heat exchanger and the electric heater are enabled. The user may change the temperature and speed settings. While in this mode the unit automatically adjusts the electric heater operation to attain the pre-set temperature at the selected speed.

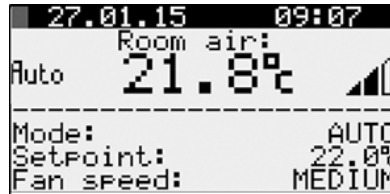


4. Scheduler — the fans, the heat exchanger and the electric heater are enabled. Temperature and speed settings are not available. While in this mode the unit operates according to a pre-programmed schedule.



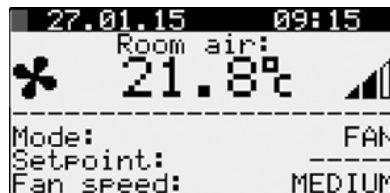
TEMPERATURE SETTING

To modify the temperature setting set the cursor at „Setpoint“ by using the button. Then use the and buttons to set the desired temperature value and then press the to confirm.
Temperature setting range: from +15 °C up to +30 °C.



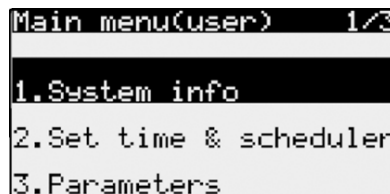
FAN SPEED SETTING

To select the desired fan speed set the cursor at „Fan speed“ by using the button. Then use the and buttons to set the desired value and then press the to confirm.
Three fan speed stages are available: Low, Medium, High. The fan rotation speed corresponding to each speed stage is set as a percentage of the maximum capacity of each fan via the unit parameter setup menu.



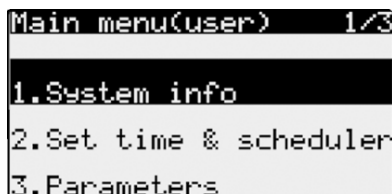
UNIT PARAMETERS

To enter the user parameter menu press the button. Use the and buttons to select the desired menu item and press the button to enter.



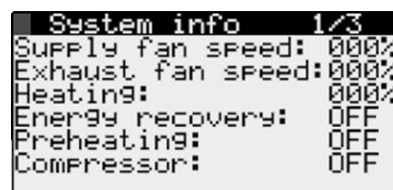
1. System information

To view the system information enter the user parameter menu and select „System info“. The „System info“ menu consists of three pages. To navigate between the pages use the and buttons.



Page 1/3 contains the following parameters:

- Current supply fan speed [%].
- Current exhaust fan speed [%].
- The current state of the heat exchanger:
On – heat exchanger enabled
Off – heat exchanger disabled
- Current heating level of electric heating elements [%]
- Current status of preheating enable signal:
On – preheating allowed
Off – preheating denied
- Current status of the cooler enable signal:
On – cooler operation allowed
Off – cooler operation denied.



Page 2/3 contains the following parameters:

- Outside air temperature [°C].
- Supply air temperature [°C].
- Extract air temperature [°C]. If it is set, the selected temperature sensor type in Parameters is the air exhaust temperature sensor.
- Room air temperature [°C]. If it is set, the selected temperature sensor type in Parameters is thTune.

```
System info 2/3
Outside air tem: 16.2%
Supply air temp: 23.1%
Room air temper: 23.4%
```

Page 3/3 contains the controller firmware information.

```
System info 3/3
Software version:
CRUNTmAHBT v2.1.01B
```

2. Set time & scheduler




To set the clock and operation schedule enter the user parameters menu and select „Set time & scheduler“.

The „Set time & scheduler“ menu consists of four pages. To

navigate between the pages use the  and  buttons.

WARNING! With the th-Tune control panel connected the operation schedule is set via the control panel!

```
Main menu(user) 2/3
1.System info
2.Set time & scheduler
3.Parameters
```




Page 1/4 enables setting the unit operation schedule. Press the  button to select the desired parameter and then set its value using the  and  buttons.

```
Scheduler 1/4
Day: MONDAY
Mode Setpoint
1:07:00 AUTO SET1
2:08:00 OFF ----
3:16:10 AUTO SET2
4:23:00 OFF ----
Copy to: MONDAY NO
```

Schedule setup. This mode can be enabled only from the pGD1 control panel.




When using th-Tune the schedule is set up according to the th-Tune control panel description.




1. Day selection.

Use the  button to select the „Day“ parameter and then use the  and  buttons to select the day for setting the schedule.

```
Scheduler 1/4
Day: MONDAY
Mode Setpoint
1:----:----:----:----
2:----:----:----:----
3:----:----:----:----
4:----:----:----:----
Copy to: ALL NO
```




2. Setting the schedule recording start time.

Press the  button to start setting the first entry. Then use the  and  buttons to set the start time for the first entry in hours.

After that press the  button to set the time in minutes and then use the  and  buttons to set the minute value.

```
Scheduler 1/4
Day: MONDAY
Mode Setpoint
1:06:00 ----:----
2:----:----:----:----
3:----:----:----:----
4:----:----:----:----
Copy to: ALL NO
```




3. Operation mode setup.

After setting the time press the  button to set the unit operation mode. Use the  and  buttons to select one of the following modes:

- OFF
- FANS
- Auto
- Scheduler

```
Scheduler 1/4
Day: MONDAY
Mode Setpoint
1:06:00 AUTO ----
2:----:----:----:----
3:----:----:----:----
4:----:----:----:----
Copy to: MONDAY NO
```

4. Selecting a setpoint.

After setting the operation mode press the  button to adjust the setpoint. Use the  and  buttons to select one of the pre-programmed setpoints. Open the „Set time & scheduler“ menu on page 3/3 to define the setpoints on page 4/4.

```
Scheduler 1/4
Day: MONDAY
Mode Setpoint
1:06:00 AUTO SET1
2:----:----:----:----
3:----:----:----:----
4:----:----:----:----
Copy to: MONDAY NO
```

5. Setting up other entries.

Other entries are set up similarly.

Scheduler 1/4		
Day	Mode	Setpoint
1:06:00	AUTO	SET1
2:07:00	OFF	----
3:16:00	FANS	SET2
4:22:00	OFF	----
Copy to:	ALL	YES

6. Copying schedule entries to other days.

After programming all the necessary entries they can be copied to any other day of the week as follows:

1. Use the button to set the cursor at „Copy to“.
2. Use the and buttons to select a day of the week or all days.
3. Press and then use the and buttons to select „Yes“.
4. To confirm the copying operation press the .

Scheduler 1/4		
Day	Mode	Setpoint
1:06:00	AUTO	SET1
2:07:00	OFF	----
3:16:00	FANS	SET2
4:22:00	OFF	----
Copy to:	ALL	YES

Setting up exception periods

Page 2/4

While in the Scheduled operation mode you may need to create a period of operation to a different set of scheduled settings between two identical entries. This is done by setting exception periods.

Scheduler 2/4			
Start	Stop	Mode	Setp.
---	---	---	---
---	---	---	---
---	---	---	---
---	---	---	---

Exception period setting.

To select a parameter press the button.

Then use the and buttons to set the desired parameter value.

Scheduler 2/4			
Start	Stop	Mode	Setp.
09.05	29.05	OFF	----
---	---	---	---
---	---	---	---
---	---	---	---

Setting up special days

Page 3/4

While in the Scheduler you may need to program a special set of parameters for a whole day. This is done by setting up special days.

Scheduler 3/4		
Spec.days	Mode	Setp.
D1:--.--	----	----
D2:--.--	----	----
D3:--.--	----	----
D4:--.--	----	----
D5:--.--	----	----
D6:--.--	----	----

1. Setting up the special day date.

Select the „Date“ parameter by pressing the button and then use the and buttons to select the day in the month to designate a special day.

Scheduler 3/4		
Spec.days	Mode	Setp.
D1:31.--	----	----
D2:--.--	----	----
D3:--.--	----	----
D4:--.--	----	----
D5:--.--	----	----
D6:--.--	----	----

2. Setting up the special day month.

Press the button to select the „Month“ parameter and then use the and buttons to select the month for assigning a special day to.






Scheduler 3/4		
Spec.days	Mode	Setp.
D1:31.12	---	----
D2:--.--	----	----
D3:--.--	----	----
D4:--.--	----	----
D5:--.--	----	----
D6:--.--	----	----

3. Setting up the special day mode.

Select the „Mode“ parameter by pressing the button and then use the and buttons to assign the operation mode to the special day.

Scheduler 3/4		
Spec.days	Mode	Setp.
D1:31.12	AUTO	----
D2:--.--	----	----
D3:--.--	----	----
D4:--.--	----	----
D5:--.--	----	----
D6:--.--	----	----

4. Selecting the special day setpoint.

Press the  button to select the „Set.“ parameter and then use the  and  buttons to select the setpoint required on the special day. Once done with the special day setup press the  button to save the changes. After pressing the  button the cursor will jump to the first step of setting the next special day.

Scheduler 3/4		
Spec.days	Mode	Setp.
D1:31.12	AUTO	SET3
D2:--.--	----	----
D3:--.--	----	----
D4:--.--	----	----
D5:--.--	----	----
D6:--.--	----	----

5. Setting up other special days.

Other special days are set up similarly.



Scheduler 3/4		
Spec.days	Mode	Setp.
D1:31.12	AUTO	SET3
D2:04.05	FANS	----
D3:06.06	AUTO	SET2
D4:09.09	AUTO	SET1
D5:--.--	----	----
D6:--.--	----	----

Setting up setpoints**Page 4/4**

The setpoints for schedule entries are programmed on page 4/4.

Setting up setpoints.

Press the  button to select a parameter.



Then use the  and  buttons to set the desired parameter value.

You may program up to three entries. Set the fan speed and temperature for each setpoint.

Scheduler 4/4		
Setpoints		
#	Fan speed	Temp. Setp.
1	LOW	24.0%
2	MEDIUM	22.3%
3	HIGH	21.0%




UNIT PARAMETER SETUP

To set up the unit parameters enter the user parameters menu and select „Parameters“.

The „Parameters“ menu consists of four pages. To navigate between the pages use the  and  buttons.

Main menu(user) 3/3	
1.	System info
2.	Set time & scheduler
3.	Parameters

Page 1/04 Fan speed setting.

Use the  button to select the supply or exhaust fan speed as necessary and then press the  and  buttons to set the speed value as a percentage of the maximum speed.

After that press the  button to save the settings.

The „Main sensor“ parameter allows changing the temperature measuring location to account for the value and subsequent processing by the firmware.

If the unit serves a number of spaces the parameter value should be set to „Exh. air“

When setting or editing a parameter the th-Tune control panel must be installed in the space supplied by the unit.

Parameters	
Main sensor:	Exh.air
F1.Exh.fan speed1:	040%
F2.Sup.fan speed1:	040%
F3.Exh.fan speed2:	070%
F4.Sup.fan speed2:	070%
F5.Exh.fan speed3:	100%
F6.Sup.fan speed3:	100%

Page 2/04. Setting up temperature setpoints.

Press the button to select the temperature setpoint and then use the and buttons to define the temperature setpoint value. After that press the button to save the settings.

```
Parameters
T1.Fan speed decrease
temp.setpoint:15.0%
T4.Return to normal
speed diff.: 10.0%
```

T1 is the setpoint for the supply air temperature at which the unit will switch to a lower speed in case of failure to attain the pre-programmed temperature conditions.
T4 is the temperature increase relative to **T1** for switching to the pre-programmed speed.

Page 3/04. Temperature regulator operation setup.

```
Temperature regulator
G2(winter)..... 0
G3(summer)..... 1
Types of regulation:
0-supply air temp(SAT)
regulation.
1-room temp(RAT)regul.
whith limits of SAT
```

For „Winter“ and „Summer“ modes it is possible to choose the type of the temperature regulator. If the temperature regulator type value is „0“ the temperature is controlled by supply air temperature. If the temperature regulator type value is „1“ the temperature is controlled by room temperature.

Page 4/04. Hour meter operation.

```
Parameters 4/4
Reset of operating
hours counter: No
Max.operating time
to filter replacement:
03000hours
```

On elapsing of the filter replacement interval (3,000 hours by default) the system will generate a filter replacement alert. To reset the filter replacement alerts once the filter has been replaced press the respective button to make the following menu selection: Hour meter reset – „RESET“. To change the filter replacement alert parameter set the time as desired and press .

ALARMS

In the event of an alarm the controller display shows the pictogram .

```
27.01.15 12 01
Room air:
21.8%
-----
Mode: OFF
Setpoint: ----
Fan speed: ----
```

To respond to an alarm press the button to enter the active alarms menu.

```
Active alarms
E02
Outside air temp.(OAT)
sensor fail
```

The controller resets the alarm automatically on detecting that its cause has been eliminated.

```
Active alarms
There are no
active alarms
```

The active alarms can be reset manually. To reset an alarm manually press the button while in the active alarms menu to enter the alarm management menu.

```
Alarm management
Active alarms:00
Press key:
'←' to view active
alarms list
'⊙' to view history
'⚠' to reset alarms
```

The alarm management menu enables the following actions:

- viewing the current alarm list
- viewing the alarm history
- reset the alarms

TECHNICAL MAINTENANCE



DISCONNECT THE UNIT FROM POWER MAINS PRIOR TO ANY MAINTENANCE OPERATIONS.

Maintenance operations of the unit are required 3–4 times per year. Maintenance includes general cleaning of the unit and the following operations:

1. Filter maintenance:

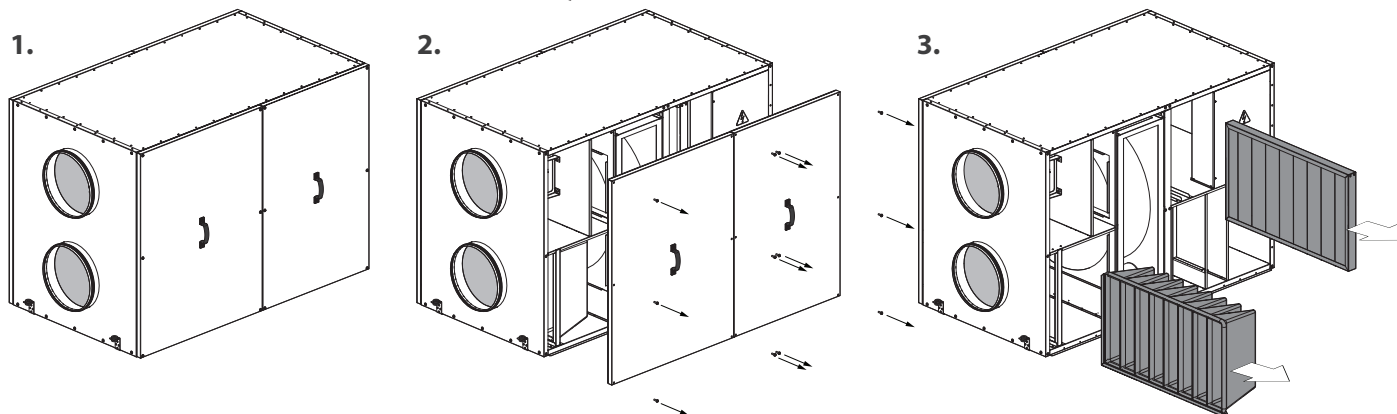
Dirty filters increase air resistance in the system and reduce supply air volume. The filters require cleaning not less than 3–4 times per year. On elapsing of 3,000 operating hours the unit controller generates the filter replacement or cleaning alert. Clean or replace the filters and reset the hour meter.

Vacuum cleaning is allowed. After two consecutive cleanings filters must be replaced. For new filters contact the Seller.

Sequence of filter removal:

1. Disconnect the unit from power mains.
2. Undo the screws securing the service panels in place.
3. Remove the side panels.
4. Pull the filters to remove.
5. Replace the filters in the reverse order.

SEQUENCE OF FILTER REMOVAL:

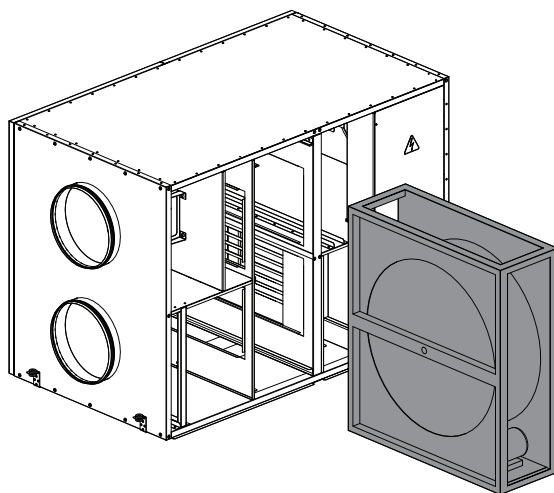


2. Heat exchanger maintenance (once per year).

Some dust may accumulate on the heat exchanger block even in case of regular maintenance of the filters. To maintain the high heat recovery efficiency, regular cleaning is required. To clean the heat exchanger remove it from the unit and clean the heat exchanger by using compressed air or a vacuum cleaner. After cleaning re-install the heat exchanger into the unit.



CLEAN THE UNIT CAREFULLY SO AS NOT TO DAMAGE THE HEAT EXCHANGER CELLS.



1. Disconnect the unit from power mains.
2. Undo the screws securing the service panels in place.
3. Remove the side panels. Then unscrew the angle pieces securing the heat exchanger (except KOMFORT Roto EC LE400).
4. Unplug the connector to the heat exchanger motor and remove the grounding terminal.
5. Pull the heat exchanger and remove it from the unit.
6. Install the heat exchanger in the reverse order.

3. Fan maintenance (once per year).

Even in case of regular maintenance of the filters, some dust may accumulate inside the fans and reduce the fan performance and supply air flow. Clean the fans with a soft cloth or brush. Do not use water, aggressive solvents or sharp objects as they may damage the impeller.

4. Supply air flow control (twice per year).

The supply duct grille may get clogged with leaves and other objects reducing the unit performance and supply air delivery. Check the supply grille twice per year and clean it as required.

5. Ductwork system maintenance (once in 5 years).

Even regular fulfilling of all the prescribed above maintenance operations may not completely prevent dirt accumulation in the air ducts which leads to air pollution and reduces the unit capacity. Duct maintenance means regular cleaning or replacement.

POSSIBLE FAULTS AND TROUBLESHOOTING

Problem	Possible reasons	Troubleshooting
The fan(s) do(es) no start.	No power supply.	Make sure the power supply line is connected correctly, otherwise troubleshoot a connection error.
	Motor jammed, impeller blades dirty.	Turn the unit off. Troubleshoot the motor jam and the impeller clogging. Clean the blades. Restart the unit.
	System alarm. System alarm list is shown below.	Identify the system failure by entering the active alarms menu and remedy the problem. If the system failure may not be remedied without enlisting expert help contact the Seller.
Automatic circuit breaker tripping following the unit turning on.	High current consumption caused by a short circuit.	Turn the unit off. Contact the Seller.
Low air flow.	Fan speed set too low.	Set higher speed.
	Filters, fans or heat exchanger dirty.	Clean or replace the filters, clean the fans and the heat exchanger.
	Ventilation system elements (air ducts, diffusers, louver shutters, grilles) clogged, damaged or closed.	Clean or replace the ventilation system elements, such as air ducts, diffusers, louver shutters, grilles.
Cold supply air.	Exhaust filter dirty.	Clean or replace the extract filter.
	Unit in Cooling mode.	Check the unit operation settings.
Noise, vibration.	Impeller(s) dirty.	Clean the impeller(s).
	Loose screw fastenings of fan or casing.	Tighten the screw connection of the fans or the casing against stop.
	No anti-vibration connector on air duct pipe flanges.	Install anti-vibration connectors.
SYSTEM ALARMS		
Fire alarm	Emergency stop of the system on signal from fire fighting system. In case of such alarm the fans are stopped.	In case of such alarm follow the emergency instructions and leave the room and the building.
Temperature sensor failure	Breakdown or short circuit of the air temperature sensor. In case of such alarm the fans are stopped.	Contact the Seller.
Control panel failure	Communication loss with the control panel.	Check the connection of the control panel to the controller. Contact the Seller.
Low supply air temperature	The supply air temperature is below +14 °C (factory setting).	Clean or replace the extract filter. Check the unit operation settings.
Filter replacement required	Filter replacement interval expiration.	Clean or replace the filters.

STORAGE AND TRANSPORTATION REGULATIONS

Store the unit in the manufacturer’s original packing box in a dry closed ventilated premise with temperature range from +5 °C to + 40 °C. Storage environment must not contain aggressive vapours and chemical mixtures provoking corrosion, insulation and sealing deformation. Use hoist machinery for handling and transportation to prevent possible mechanical damages of the unit. Follow the applicable moving regulations specific to the particular cargo type while loading and unloading. The unit can be transported in the original packing by any mode of transport without limitation provided proper protection against precipitation and mechanical damage. The unit can be transported only in the working position. Avoid sharp blows, scratches or rough handling during loading and unloading. Prior to the initial power-up after transportation at subzero temperatures allow the unit to warm up at room temperature for at least 3–4 hours.

MANUFACTURER'S WARRANTY

The manufacturer hereby warrants normal operation of the unit for 24 months after the retail sale date provided the user's observance of the transportation, storage, mounting and operation regulations.

Should any malfunctions occur in the course of the unit operation through the Manufacturer's fault during the guaranteed period of operation the user is entitled to elimination of faults by the manufacturer by means of warranty repair at the factory free of charge.

The warranty repair shall include work specific to elimination of faults in the unit operation to ensure its intended use by the user within the guaranteed period of operation. The faults are eliminated by means of replacement or repair of the unit components or a specific part of such unit component.

The warranty repair does not include:

- routine technical maintenance
- unit installation / dismantling
- unit setup

To benefit from warranty repair the user must provide the unit, the user's manual with the purchase date stamp and the payment document certifying the purchase.

The unit model must comply with the one stated in the user's manual.

Contact the Seller for warranty service.

The manufacturer's warranty does not apply to the following cases:

- User's failure to submit the unit with the entire delivery package as stated in the user's manual including submission with missing component parts previously dismantled by the user.
- Mismatch of the unit model and the brand name with the information stated on the unit packing and in the user's manual.
- User's failure to ensure timely technical maintenance of the unit.
- External damage to the unit casing (excluding external modifications as required for installation) and internal components caused by the user.
- Redesign or engineering changes to the unit.
- Replacement and use of any assemblies, parts and components not approved by the manufacturer.
- Unit misuse.
- User's violation of the unit installation regulations.
- User's violation of the unit control regulations.
- Unit connection to the power mains with a voltage different from the one stated in the user's manual.
- Unit breakdown due to voltage surges in the power mains.
- Discretionary repair of the unit by the user.
- Unit repair by any persons without the manufacturer's authorization.
- Expiration of the unit warranty period.
- User's violation of the unit transportation regulations.
- User's violation of the unit storage regulations.
- Wrongful actions against the unit committed by third parties.
- Unit breakdown due to circumstances of insuperable force (fire, flood, earthquake, war, hostilities of any kind, blockades).
- Missing seals if provided by the user's manual.
- Failure to submit the user's manual with the unit purchase date stamp.
- Missing payment document certifying the unit purchase.



FOLLOWING THE REGULATIONS STIPULATED HEREIN WILL ENSURE A LONG AND TROUBLE-FREE OPERATION OF THE UNIT.



USERS' WARRANTY CLAIMS SHALL BE SUBJECT TO REVIEW ONLY UPON PRESENTATION OF THE UNIT, THE PAYMENT DOCUMENT AND THE USER'S MANUAL WITH THE PURCHASE DATE STAMP.

ACCEPTANCE CERTIFICATE

The air handling unit with heat recovery

KOMFORT Roto EC LE _____

is recognizes as serviceable.

The unit complies with the requirements according to the EU norms and directives, to the relevant EU-Low Voltage Equipment Directives, EU-Directives on Electromagnetic Compatibility.

We hereby declare that the following product complies with the essential protection requirements of Electromagnetic Council Directive 2004/108/EC, 89/336/EEC and Low Voltage Directive 2006/95/EC, 73/23/EEC and CE-marking Directive 93/68/EEC on the approximation of the laws of the Member States relating to electromagnetic compatibility.

This certificate is issued following test carried out on samples of the product referred to above.

Approval mark _____ Manufacturing date _____

CONNECTION CERTIFICATE

The air handling unit with heat recovery

KOMFORT Roto EC LE _____

is connected to power mains in compliance with the operation manual requirements by the professional:

Company: _____

Name: _____

Date _____ Signature _____

WARANTY CARD

KOMFORT Roto EC LE _____

SELLER

SALES DATE

REPRESENTATIVE IN EU

BLAUBERG Ventilatoren GmbH
Aidenbachstr. 52
D-81379 Munich,
Germany



BLAUBERG
Ventilatoren



www.blaubergventilatoren.de
Komfort_ROT0_EC_LE_v3(5)_EN

