

KFBT

Filter boxes with pocket filters for round ducts

Use

- For purification of supply or exhaust air in ventilation and air conditioning systems installed in various premises.
- Designed for protection of air ducts, heat exchangers, fans, controls and other ventilation system equipment against dust pollution.
- Prevent contamination of walls and ceilings located near the system.
- Can be used as pre-filters installed upstream to more efficient filters.
- Compatible with \varnothing 100 up to 315 mm round air ducts.



Design

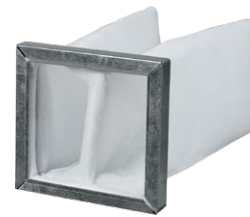
- Galvanized steel case.
- Airtight connection of the filter-box with air ducts due to connecting flanges with a rubber seal.
- Equipped with a replaceable filter bag made of synthetic non-woven cloth with filtration class **G4, F5, F7**.
- Filter cartridge is fixed on a steel wire frame.
- Quick access to replaceable filter cartridge due to lever locks on a swivel filter cover.

Mounting

- Fixing to round ducts with clamps.
- Any mounting position.
- In case of vertical mounting position provide air stream downwards to avoid filter Yesmming.
- While mounting provide extra space for free access to the filter for servicing.

Accessories

- **G4, F5, F7** replaceable filter bags made of synthetic non-woven cloth series **FP KFBT**.



Designation key

| Series | Connected air duct diameter [mm] | Filters |
|--------|-----------------------------------|------------|
| KFBT | 100; 125; 150; 160; 200; 250; 315 | G4; F5; F7 |

Overall dimensions [mm]

| Model | \varnothing D | B | B1 | H | Weight [kg] |
|----------|-----------------|-----|-----|-----|-------------|
| KFBT 100 | 99 | 210 | 230 | 170 | 2.41 |
| KFBT 125 | 124 | 220 | 240 | 206 | 2.69 |
| KFBT 150 | 149 | 270 | 290 | 236 | 3.20 |
| KFBT 160 | 159 | 270 | 290 | 236 | 3.26 |
| KFBT 200 | 199 | 320 | 340 | 276 | 3.76 |
| KFBT 250 | 249 | 370 | 390 | 386 | 4.39 |
| KFBT 315 | 314 | 430 | 450 | 390 | 5.17 |

