

DUNE Series

50 L/D Dehumidification | **450** m³/h Maximum Airflow



DUNE series dehumidifiers boast powerful dehumidification capabilities, thanks to their efficient compressors and well-designed internal structure.

Here are the six main reasons to choose it

1



Powerful Dehumidification Capability

The DUNE series boasts three different specifications of dehumidifiers, widely used in high-humidity environments such as underground garages, basements, storage rooms, and more.

2



One-Key Intelligent Dehumidification

Simply set your desired humidity level (20%-95%) with the touch of a button, and the device will automatically start operating. Once the air humidity reaches the set standard, the device will stop automatically, and it will restart if the humidity exceeds the target level.

* We recommend setting it between 50% to 60%

3



Low Noise

The combination of high-quality compressors and fans enhances the overall efficiency of the unit, resulting in energy-saving and low-noise operation.

4



6 Core Protections

- Delay Protection
- Full Water Protection
- Defrost Protection
- High/Low Temperature Protection
- Refrigerant Low Pressure Protection
- Compressor Overload Protection

5



Automatic Drainage

Equipped with a high-quality built-in water pump, the condensate is automatically discharged through the pipeline.

6



Humanized Design

The combination of high-quality compressors and fans enhances the overall efficiency of the unit, resulting in energy-saving and low-noise operation.

Internal Circulation Central Dehumidification System

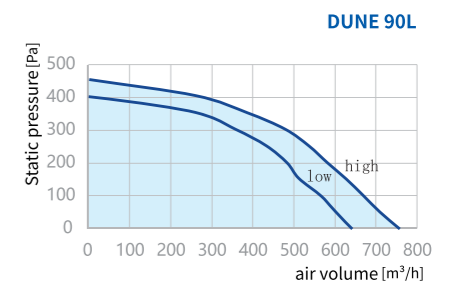
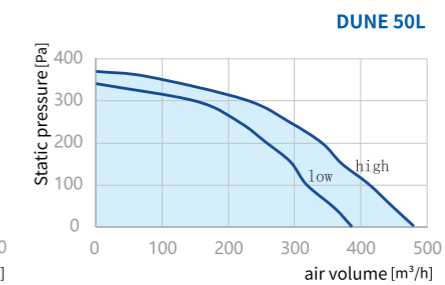
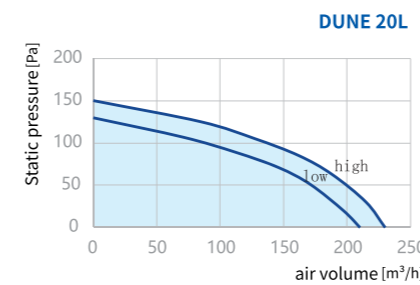
DUNE 20L/50L/90L

Dehumidification capacity equivalent to 180 bottles of mineral water per day*

20L model suitable for area 25m²-40m² | 50L model suitable for area 40m²-100m²
90L model suitable for area 100m²-160m²

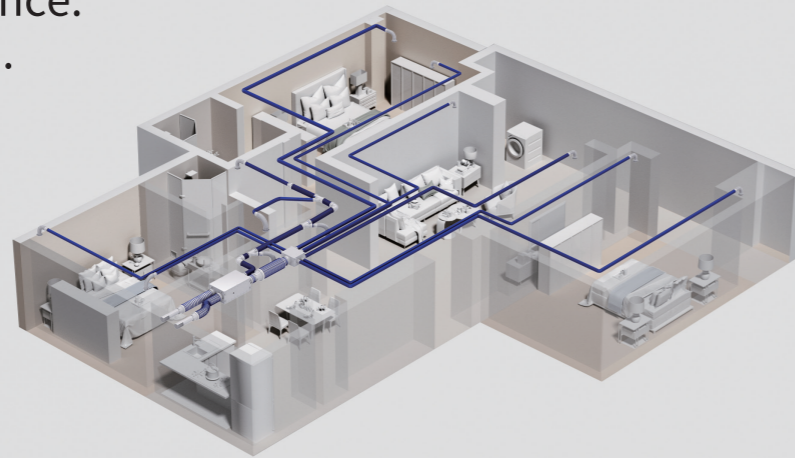
*Dune 90L model has a maximum daily dehumidification capacity of 90L, which is equivalent to 180 bottles of mineral water if each bottle contains 500ml.

< PQ Curve >



New material, more substance. A healthier Blaufast system.

BLAUFAST system has undergone a comprehensive upgrade. Both the pipes and fittings are made from environmentally friendly new materials. The pipes undergo rigorous environmental testing in authoritative laboratories for antimicrobial properties, antibacterial durability, mold resistance, weather resistance, and absence of pollutants.



BLAUFAST Duct	Origin Country	Material Used	Performance Specifications
Blue	Imported	HDPE	REACH, HY, Antibacterial, Antibacterial Durability, Mold Resistance, Antistatic, Weather Resistance Properties
Red Blue (BlauFast RK 110/40 C)	Domestic	HDPE	Antibacterial, Antibacterial Durability, Mold Resistance, Antistatic, Weather Resistance Properties

The through-wall over-beam solution

Multiple three-way diameter-changing options are available to adapt to a wider range of installation scenarios, providing more solutions for through-wall over-beam installations, making air intake less challenging.



Air vent connectors

The all-new upgraded air vent connectors reduce air noise, offering multiple sizes to meet a variety of scene requirements.



Air volume control valve

The dual-blade butterfly valve design offers a wider range of valve adjustment angles, allowing for finer control of air volume and ensuring uniform airflow distribution to every space. No more worries about airflow. The knob can be adjusted manually or using a screwdriver, making it more labor-saving.

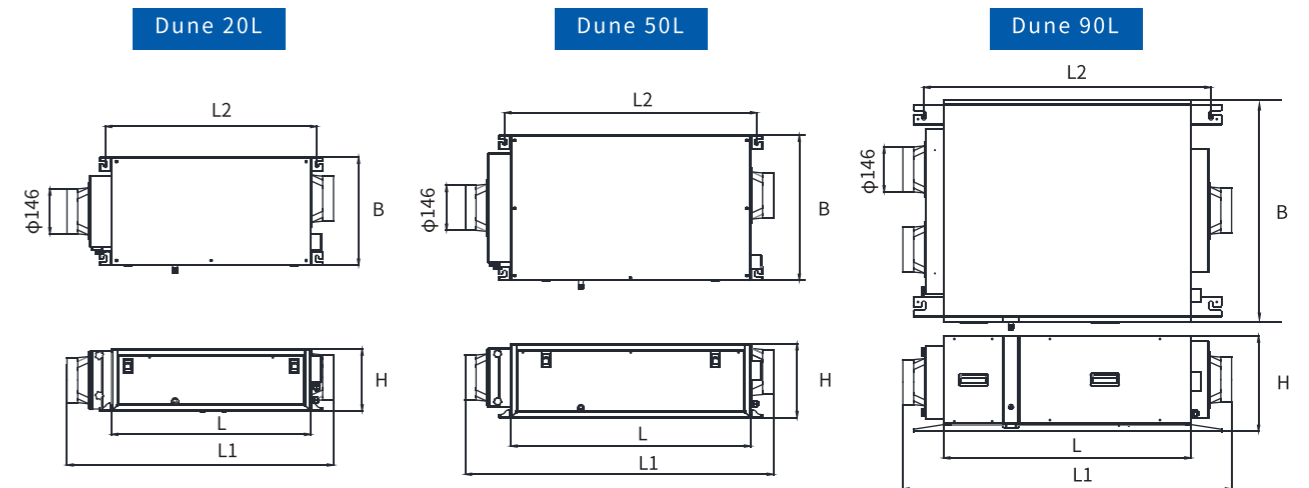
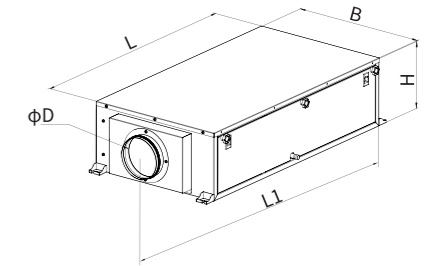
The all-new Bruck circular duct

The all-new Bruck circular duct is made from high-end thermoplastic elastomer material (TPV), utilizing seamless hot melt winding technology during production. It boasts antibacterial properties and exceptional weather resistance, withstanding temperatures ranging from -40°C to 70°C.



DUNE Series - Product Dimensions

Full Size Dimensions [mm]						
Model	φD	B	H	L	L1	L2
Dune 20L	146	351	201	646	865	686
Dune 50L	146	472	240	778	1000	818
Dune 90L	146	721	310	803	1067	932



DUNE Series - Technical Parameters

Technical parameters	DUNE 20L	DUNE 50L	DUNE 90L
Area Coverage [m ²]	25-40	40-100	100-160
Maximum Static Pressure [Pa]	150	370	450
Rated Voltage [V]		220	
Rated Frequency [Hz]		50	
Dehumidification Capacity [L/day] (30°C/80%)	20	50	90
Airflow [m ³ /h]	200	450	700
Rated Power [W]	400	1150	1350
Noise Level [dB(A)]	38	45	47
Casing Material	Polymer coated steel plate		
Refrigerant/Charge [g]	R134a/900		
Air Supply Filter	R134a/260	G2	R410A/900
Air Vent Flange [mm]		146	
Weight [kg]	28	47	65

Test Conditions Remarks:
 1. Input power, dehumidification capacity, noise level, airflow, etc., are all test data obtained under dehumidification mode.
 2. Airflow, input power, dehumidification capacity, etc., are measured with a 1m air duct connected to the air intake and air outlet of the unit, under a static pressure of 50Pa.
 3. The noise level is the A-weighted average sound pressure level, which is the central value of the laboratory test results, with a tolerance range of ±3dB.
 4. The noise level is measured indoors in a noise testing room, 1.5m below the product (with a 1m muffler connected to the air outlet of the unit and a 1m air duct connected to the air intake).