



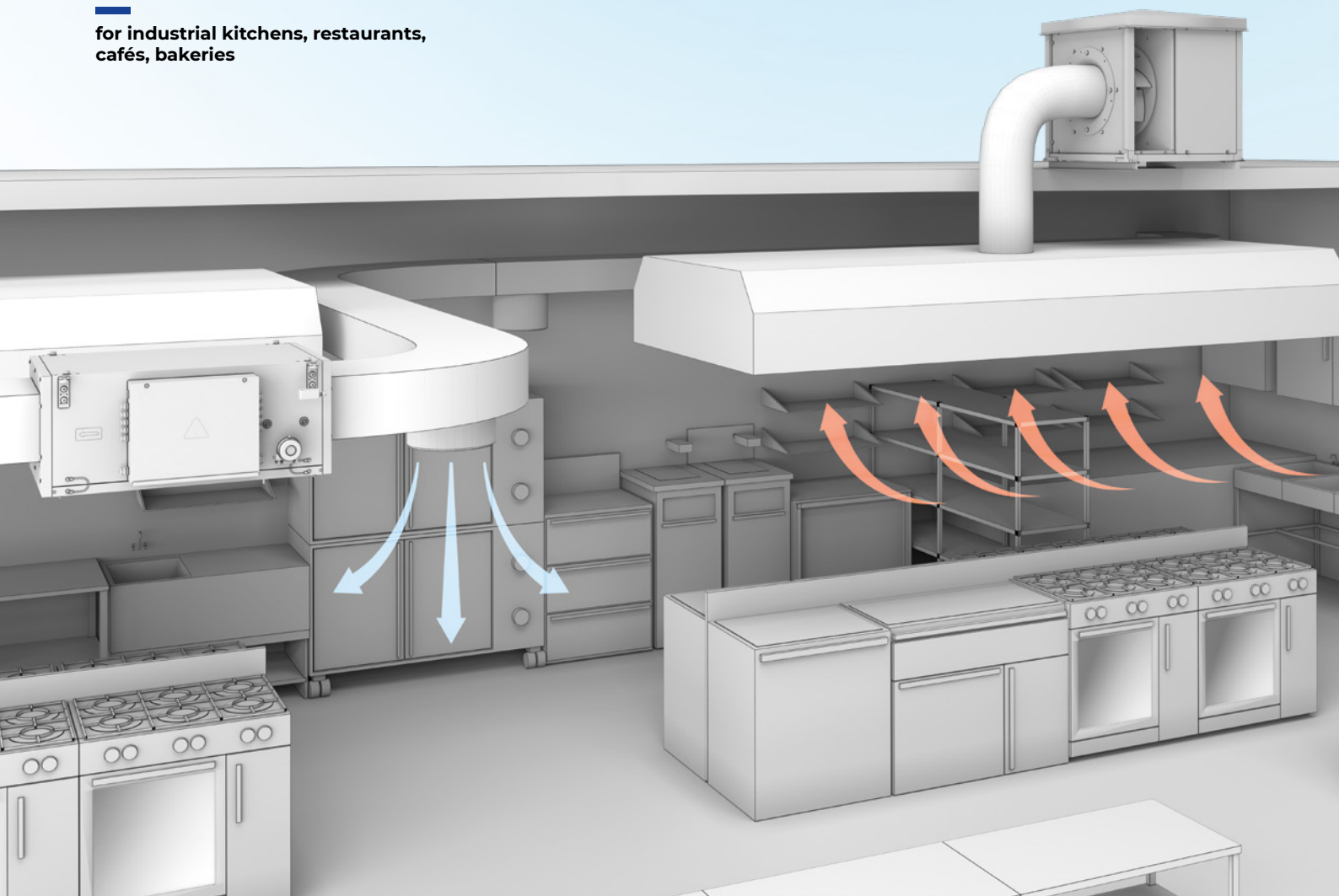
KITCHEN VENTILATION



2024

OPTIMAL SOLUTIONS

for industrial kitchens, restaurants,
cafés, bakeries



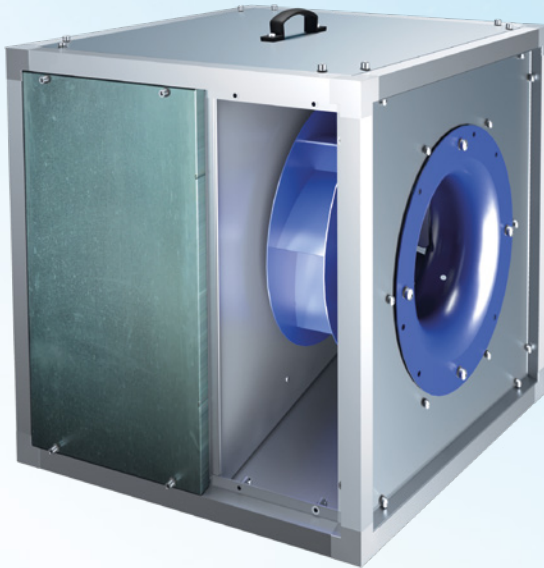
 6	 10	 14
ISO-VK	ISO-K	BOX-S
 18	 20	 20
BLAUBOX EC	PRIMO	ISO-PRIMO
 20	 20	 20
CENTRO-M	BOX	BOX-I
 22	<p>Exhaust kitchen fans: temperature up to 120 °C</p> <p>Exhaust smoke extract fans: temperature up to +400 °C (2 hours)</p>	<p>Supply units and fans</p> <p>Accessories</p>
ACCESSORIES		

CONTENTS



EXHAUST KITCHEN FANS

temperature up to 120 °C



ISO-VK

AC: air flow up to 21 860 m³/h

EC: air flow up to 27 500 m³/h

Temperature up to 120 °C (continuous operation)

AC motors, EC motors

APPLICATION

Designed to extract contaminated hot air, containing grease (when using grease filters), in conditions requiring high durability

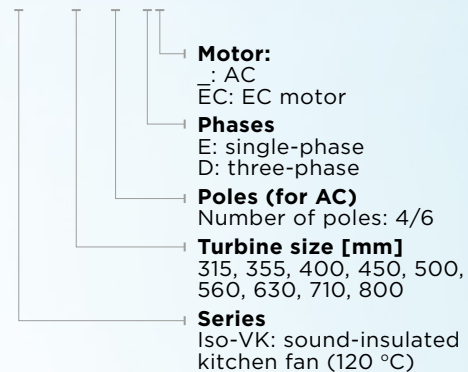
Perfectly function in various ventilation systems for:

restaurant or café kitchens

industrial bakeries

Designation key

Iso-VK EC 315 4E



Construction

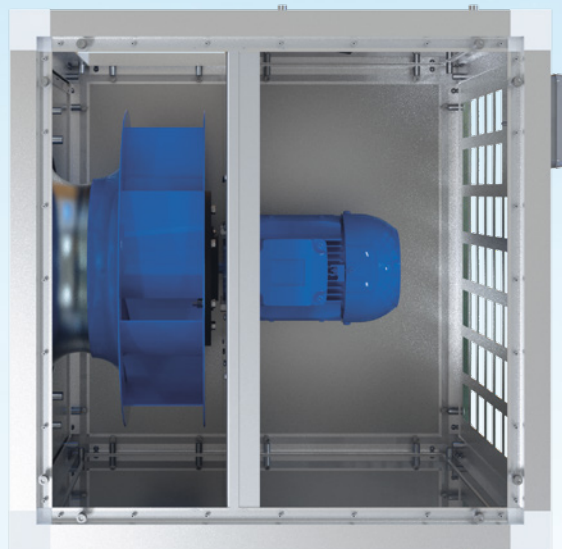
Motor protection rating: IP55

Motor insulation class: F

Galvanized steel impeller with backward curved blades made of heat-resistant steel

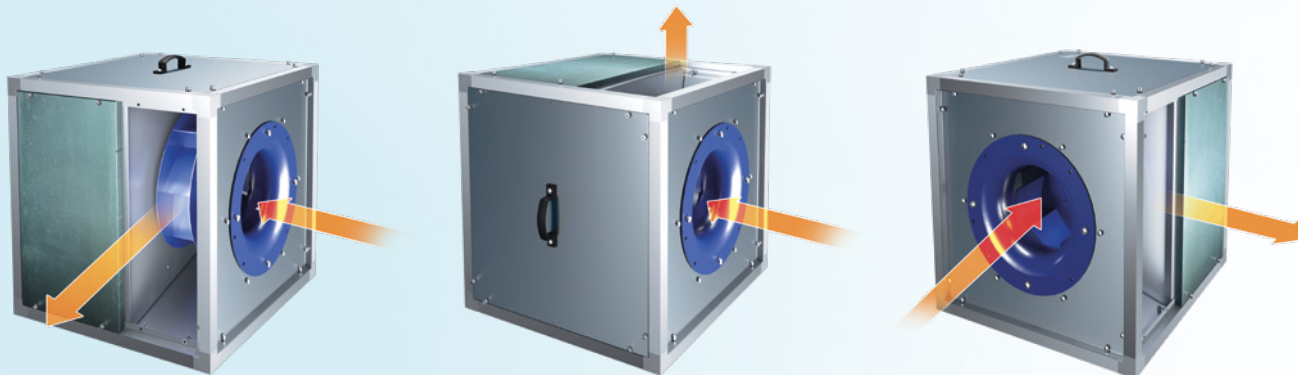
Single-phase or three-phase motors

The motor is located outside the air flow and separated from the impeller with a metal panel



Versatility of mounting

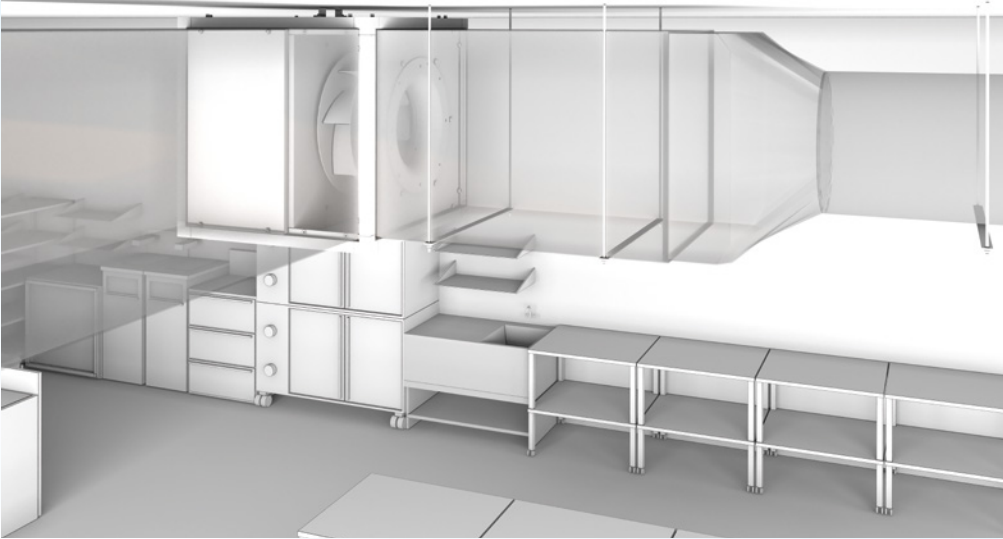
The direction of air flow can be easily changed by rearranging the panel.



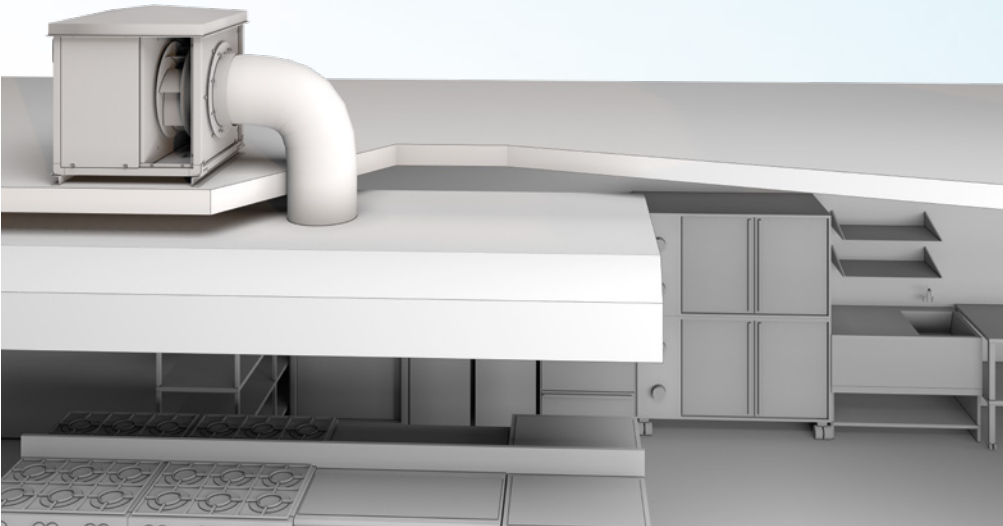


EXHAUST KITCHEN FANS: TEMPERATURE UP TO 120 °C

Application



Indoor application

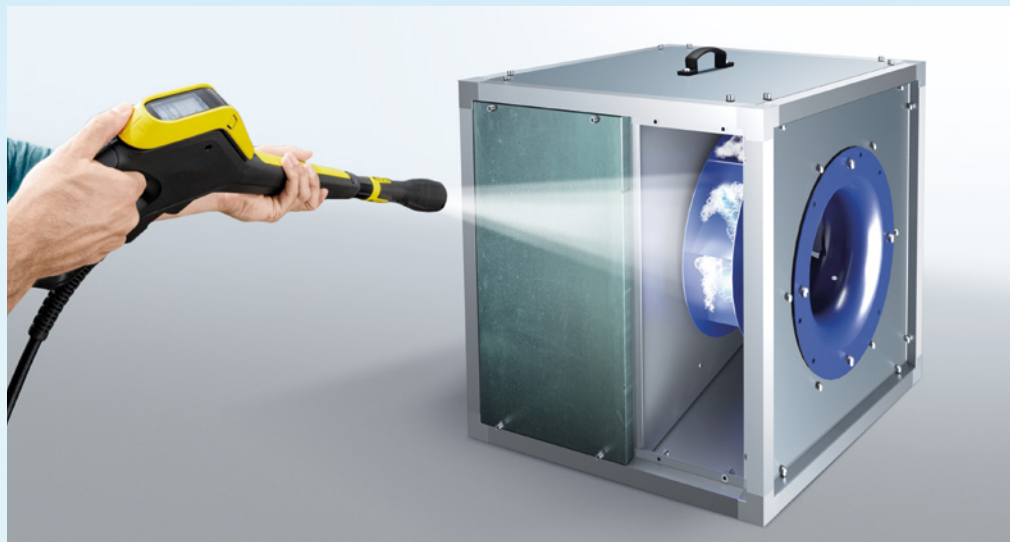


Outdoor application

Maintenance

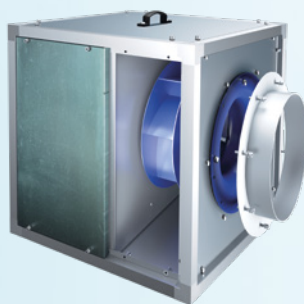
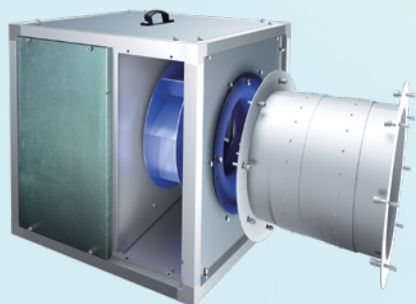
Easy maintenance
with cleaning tools

Drainage included
(washable with Kärcher
cleaning tools)

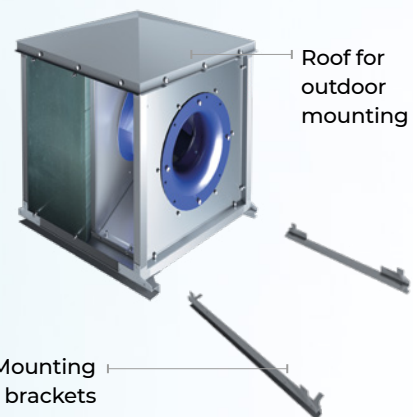


Accessories

Special flanges for round ducts



Mounting accessories





ISO-K

Air flow up to 8 138 m³/h

Temperature up to 120 °C (continuous operation)

AC motors

APPLICATION

Designed to extract contaminated hot air, containing grease (when using grease filters), in conditions requiring high durability

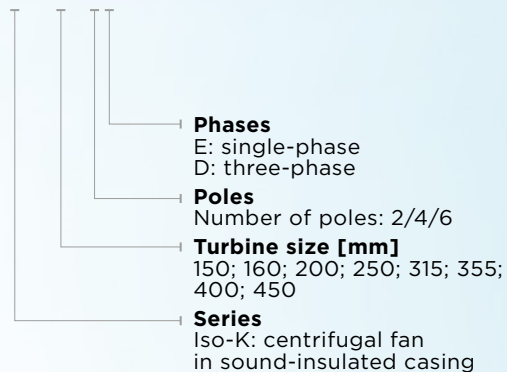
Perfectly function in various ventilation systems for:

restaurant or café kitchens

industrial bakeries

Designation key

Iso-K 160 4E



blaubergventilatoren.de

Motor

The motor is located outside the air flow and separated from the impeller with a metal panel

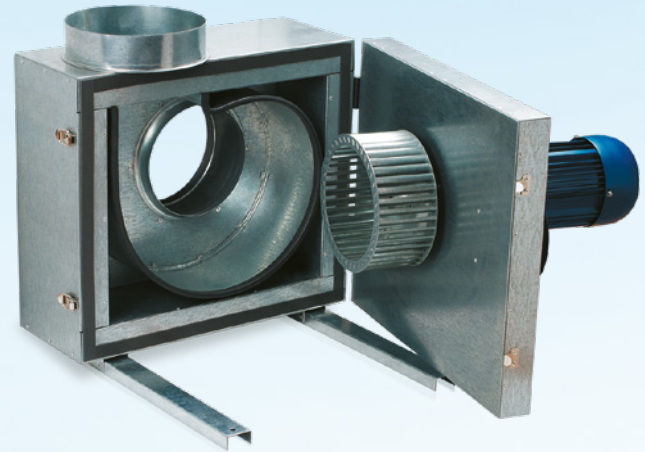
Motor protection rating IP54

Galvanized steel impeller with backward or forward curved blades

Single-phase or three-phase motors

Compatible with round air ducts

The spigot diameter matches the standard air duct sizes



Maintenance

Easy maintenance



Accessories



Fixing bracket
UM Iso-K



Sleeve
V Iso-K



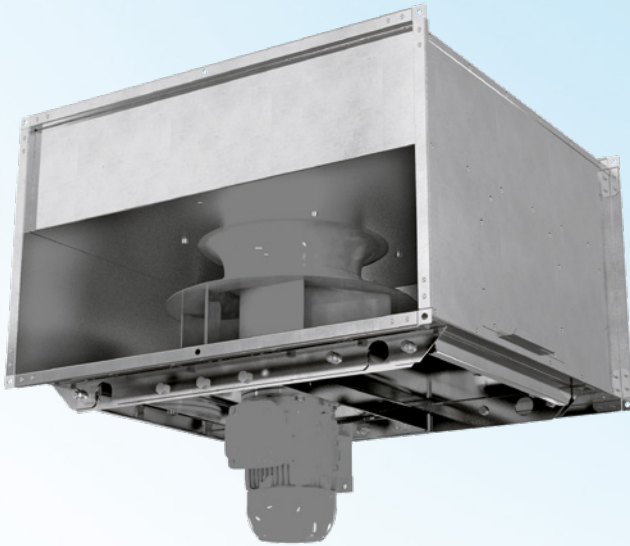
Flexible connector
EVA



**EXHAUST SMOKE
EXTRACT
KITCHEN FANS**

temperature up to +400 °C
for 2 hours

EXHAUST KITCHEN FANS: TEMPERATURE UP TO +400 °C
FOR 2 HOURS



BOX-S

Air flow up to 28 500 m³/h

Temperature up to 400 °C for 2 hours
(100 °C continuous operation)

APPLICATION

The dual-purpose fan is used in emergency exhaust ventilation systems for forced removal of smoke, heated gases and combustion products, as well as for general exhaust ventilation of shopping malls, garages, warehouses, kitchens

Designation key

Box-S 25-2E/0.37-50x30

Spigot dimensions [cm]

50x30; 60x30; 60x35;
70x40; 70x50; 80x60;
90x70; 100x70; 120x90

Motor power [kW]

x: single-speed; x/x: two-speed

Phases

E: single-phase; D: three-phase

Poles

single-speed fan: 2/4/6
two-speed fan: 2/4; 4/6; 4/8

Impeller standard size [cm]


25; 28; 31.5; 35.5; 40;
45; 50; 56; 63; 71


Series


Box-S: rectangular inline
fan for smoke removal





Motor

 AC motor


 The motor is located outside to avoid obstructing the air flow and separated from the impeller with a metal panel

 Motor protection rating IP54

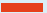
 Galvanized steel impeller

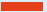
 Single-phase or three-phase motors

 The fans can be equipped with a single- or three-phase electric motor

 Single-speed fans are equipped with 2-, 4- or 6-pole motors. Two-speed fans are equipped with 2/4, 4/6, 4/8-pole motors

Operation

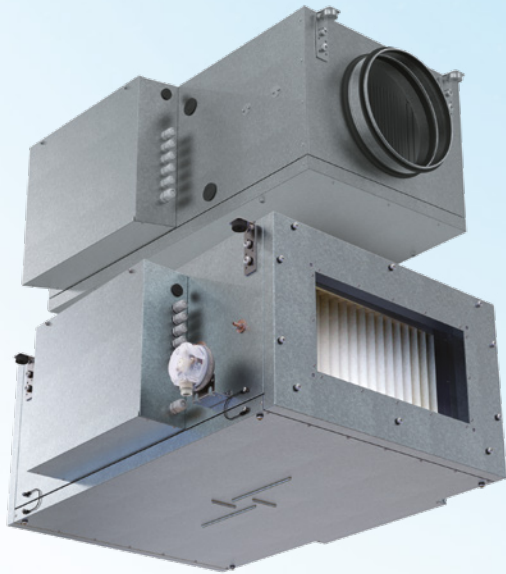
 The fan is designed to remove smoke and air mixtures up to +400 °C for 120 minutes and for continuous operation at a temperature of the transported medium up to +100 °C

 The fans can be equipped with a frequency converter for controlling the rotation frequency





SUPPLY UNITS AND FANS



BLAUBOX EC ME/MW

Air flow up to 4 950 m³/h

EC motors

Electric or water heater

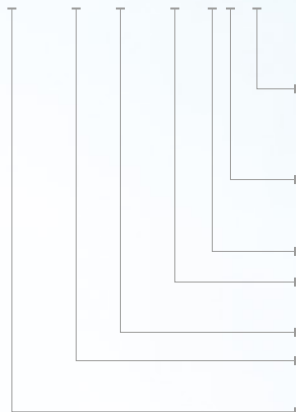
BMS 

APPLICATION

Ventilation units for efficient supply ventilation in various premises. Controllable air supply, heating and filtration

Designation key

Blaubox EC MW 1000 _ L S31



Automatic control system

S30: kVent controller with th-Tune remote controller
S31: kVent controller without the remote controller
S32: kVent controller with pGDE remote controller

Connection side

L: left
R: right

Number of heat exchanger rows (for water heater only)

Maximum air flow [m³/h]: 700; 1000;
1500; 2000; 3000; 4000

Heater type: MW - water heater, ME - electric heater

Motor type



EC: electronically commutated

Series

Blaubox - single-block air supply unit



Control and automation

Functions	S31
Wired control panel	S30 
	S32 
Unit on / off	+
Speed control	+
Filter clogging control by pressure sensor	+ (except Blaubox EC MW/ME 700)
Filter clogging control by timer Blaubox EC MW/ME 700	+
Weekly schedule	+
Electric heater protection	+
Supply air temperature control	+
Outer temperature sensor	+
Reheater	Water or electric
Air damper control	+
Alarm indication	+
BMS connection	ModBUS (RTU)
Humidity sensor	0-10 V or NO
CO ₂ sensor	0-10 V or NO
Three-way valve control	+
Circulation pump control	+
Condensing unit control	0-10 V





PRIMO



Air flow up to 5 700 m³/h

AC or EC motors

Single-phase motors

Round ducts from 150 to 400

High-efficiency mixed-flow impeller

The casing is made of high-quality durable plastic



ISO-PRIMO



Air flow up to 5 415 m³/h

AC or EC motors

Single-phase motors

Round ducts from 200 to 400

High-efficiency mixed-flow impeller

The casing is made of galvanized steel with 30 mm of sound insulation



CENTRO-M



Air flow up to 6 280 m³/h

AC or EC motors

Single-phase motors

Round ducts from 100 to 450

Centrifugal impeller with backward curved blades

The casing is made of steel with a special polymer coating

blaubergventilatoren.de



BOX



Air flow up to 11 190 m³/h

AC or EC motors

Single-phase or three-phase motors

Centrifugal impeller with backward curved blades

The casing is made of galvanized steel



BOX-I



Air flow up to 11 190 m³/h

AC or EC motors

Single-phase or three-phase motors

Centrifugal impeller with backward curved blades

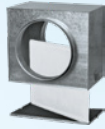
The casing is made of galvanized steel with 50 mm of sound insulation



Accessories for round ducts for inline fans



Silencer
SD



Filter
KFBK



Filter
KFBV



Heater
EKH



Heater
WKH



Backdraft
damper
VRV

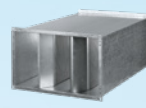


Air damper
VK



Clamps

Accessories for rectangular ducts for inline fans



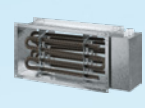
Fixing bracket
SD



Sleeve
KFBK



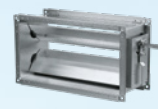
Flexible
connector
KFBT



Flexible
connector
EKH



Heater
WKH



Air flow
regulator
SL



Flexible
connectors
EVA

Speed control switches



CDP-2/5(3/5)

Speed controllers for fans equipped with EC motors



CDT E1.8

blaubergventilatoren.de

Speed controllers for fans equipped with AC motors

Thyristor speed controllers for smooth control



CDT1 E



CDT E/0-10





blaubergventilatoren.de

Blauberg Ventilatoren GmbH
Stäblistraße 6
81477 Munich, Germany
HRB 203341

info@blaubergventilatoren.de

Technical changes reserved.
Illustrations and texts are non-binding.

08|2024

