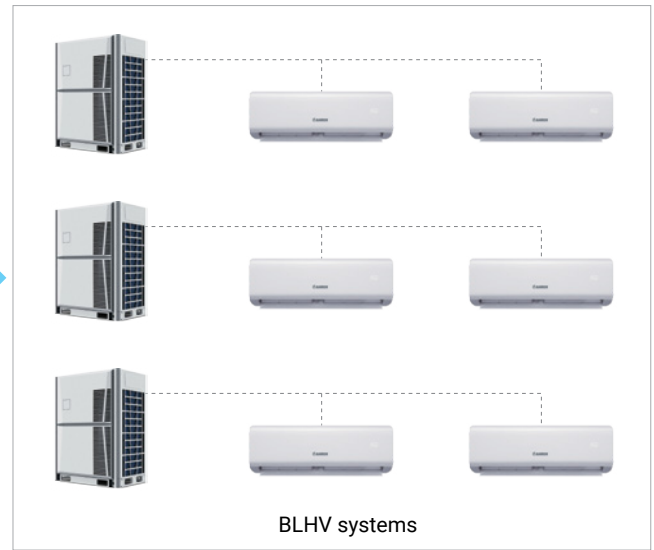
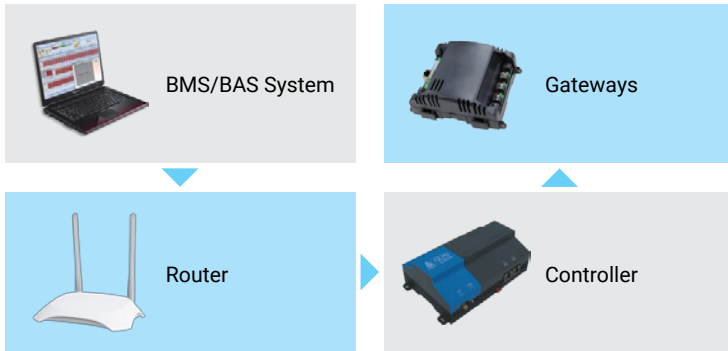


CONTROLLERS

VRF SYSTEM

CHV-NET(CENTRALIZED CONTROL SYSTEM)

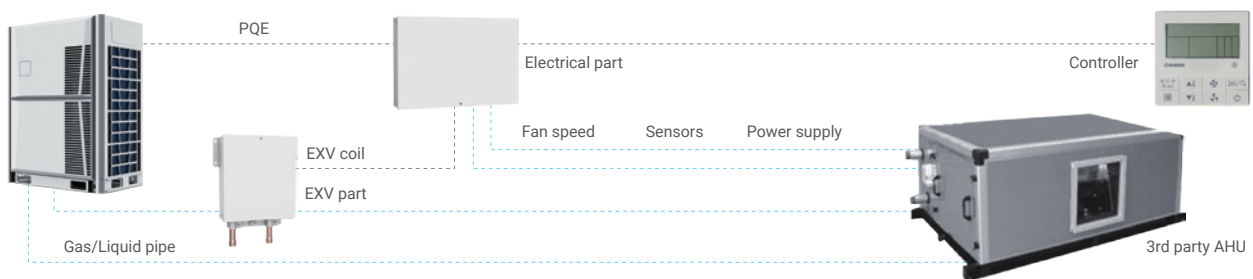
- o Centralized control
- o Electricity charge management
- o Operation data record
- o Schedule management



AHU CONNECTION KIT

- o BLHV AHU kit is an interface that allows 3rd party manufacturer's AHU connecting to GCHV VRF outdoor units.
- o No address limit and automatic addressing.
- o Split type, convenient for installation.
- o One electrical part has one address and can max. connect 4 EXV parts.
- o One AHU kit can max. connect up to 120HP.

Electrical part	EXV part	Sensors & wires	Controller
<ul style="list-style-type: none"> • PCB • Power terminals • Communication terminals 	<ul style="list-style-type: none"> • Outlet pipe • Inlet pipe • EXV 	<ul style="list-style-type: none"> • T1 sensor and wire • T2 sensor and wire • T2B sensor and wire • Controller wire 	

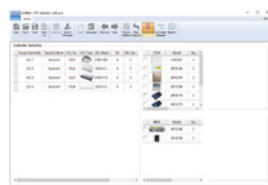


VRF SELECTION SOFTWARE

- o The selection software provides a comprehensive selection of system design reports and calculations. Base on the units selected, the software produces detailed system layout and piping requirement calculations, greatly improves the work efficiency.



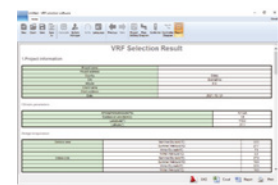
Piping diagram



Controller selection



Wiring diagram



Report